

Gate Burton Energy Park Environmental Statement

Volume 3, Appendix 10-K: Lincolnshire County Council Consultation Meeting Notes
Document Reference: EN010131/APP/3.3
January 2023

APFP Regulation 5(2)(a)
Planning Act 2008
Infrastructure Planning (Applications: Prescribed Forms and Procedure) Regulations 2009

Minutes

Meeting name	Subject	Attendees
Gate Burton Solar Farm	Review of additional viewpoints/photomontages suggested by Lincolnshire County Council	OB - Oliver Brown (on behalf of LCC) JS - Joerg Schulze (AECOM) RW - Rupert Wilson (AECOM)
Meeting date	Time	
30.03.2022	2.30pm	
Location	Prepared by	
MS TEAMS	Rupert Wilson, Joerg Schulze	

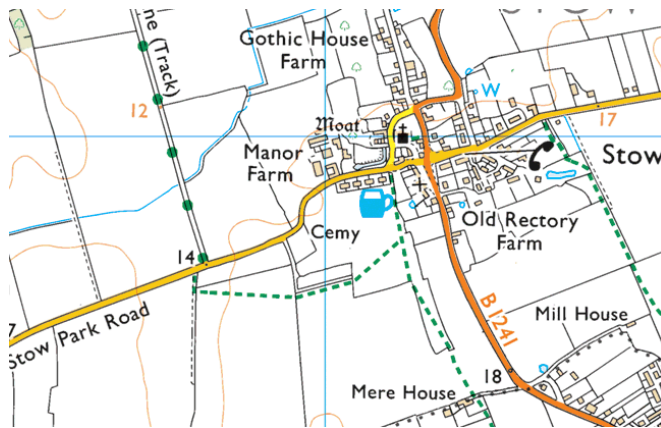
Viewpoint walkthrough discussion:

- JS reviews viewpoint locations proposed by OB on behalf of Lincolnshire County Council (LCC).
- JS mentioned that a number of viewpoints are close to where photomontage locations have been identified.
- JS, together with OB, went through individual viewpoints to verify the exact location and purpose of these views on screen in Google Earth.
- OB confirms that additional photomontages from PRoW's are required to illustrate the change of views along these routes.
- JS adjusted a number of LCC viewpoints following their review with OB in Google Earth. Updated viewpoint mapping is enclosed to these minutes.

Summary of individual viewpoint review (Letters correspond to enclosed viewpoint map):

- A (Knaith Hill): OB confirms requirement of additional photomontage from edge of settlement to indicate View / No-View.
- B (Knai/44/1): OB confirms photomontage from this viewpoint to illustrate impact on PRoW users.
- B (Knai/44/2): OB states sensitivity of view. Viewpoint photography is sufficient. No photomontage required.
- B (Upto/53/1): OB confirms photomontage requirement from this viewpoint due to openness of view.
- C: OB confirms photomontage requirement and states view from C has higher importance than view from D.
- D: OB confirms that viewpoint photography is sufficient. No photomontage required.
- E: OB confirms that viewpoint photography is sufficient. No photomontage required. JS also mentioned taking a photo to the east, southeast towards Stow to review potential cumulative effects with the proposed West Burton Solar Farm.
- F1: Scoped out – OB confirms that viewpoint photography is sufficient. No photomontage required.
- F2: Scoped out – OB confirms that viewpoint photography is sufficient. No photomontage required.

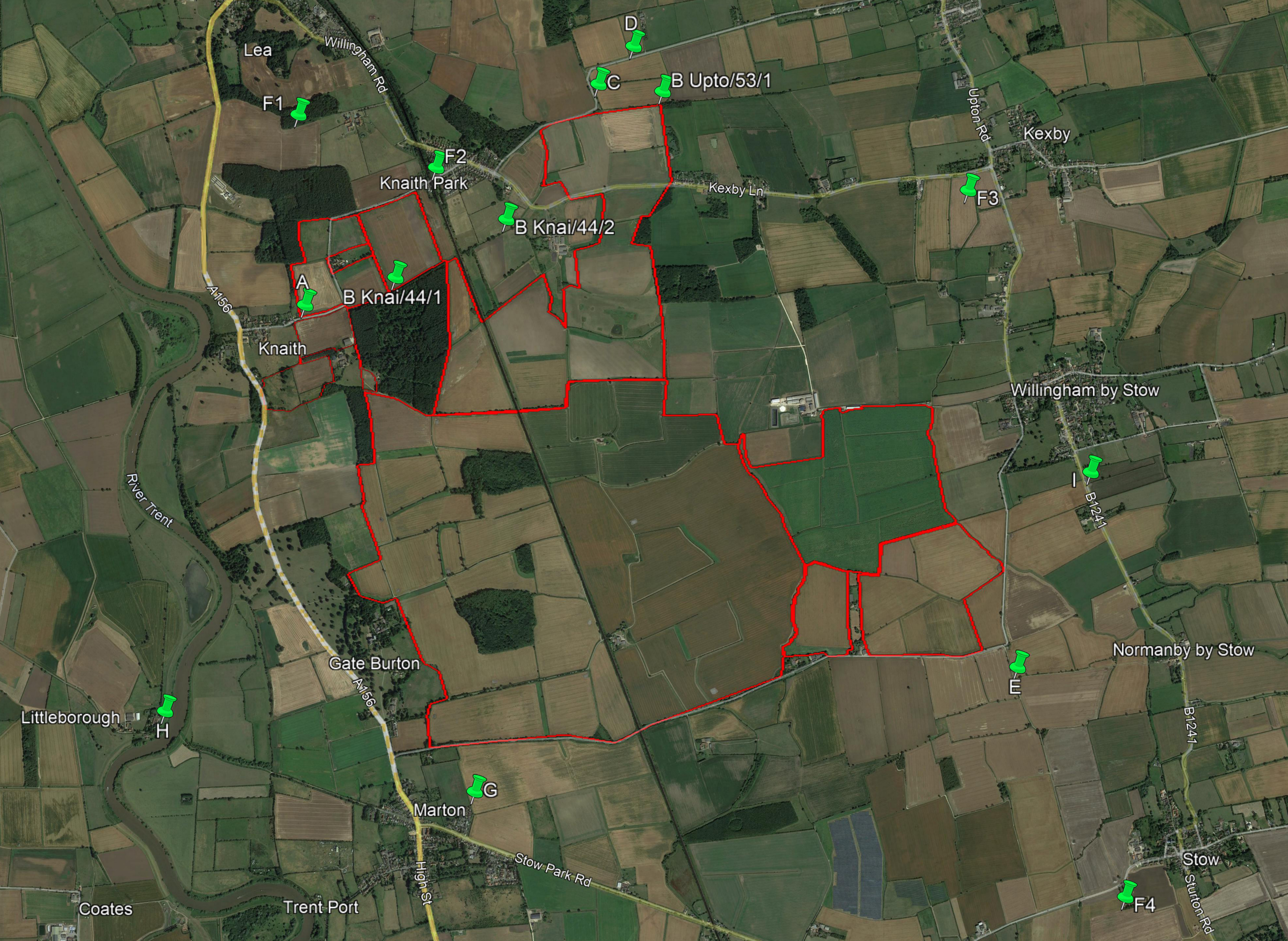
- F3: JS said that this location is similar to VP20. OB suggested that the location of F3 offers slightly more views than VP20. OB suggested this should be a photomontage. OB suggested that once verified site photography has been done from this location, view to be reviewed with OB and see if photomontage is required or not.
- F4: OB mentioned that there are a number of PRoW's in the area (please see OS mapping extract below) – OS is concerned over long distance views to the site. OB suggested that once verified site photography has been done from this location, views to be reviewed with OB and see if photomontage is required or not.



- G: OB suggested that once verified site photography has been done from this location, view to be reviewed with OB and see if photomontage is required or not.
- H: OB suggested that views are unlikely from this location but that some taller elements of the proposed development may become discernible. OB suggested wireframe photomontage.
- I: View to be included as orientated towards eastern edge of the site from B-road. OB suggested that once verified site photography has been done from this location, view to be reviewed with OB and see if photomontage is required or not. JS mentioned potential long distance view towards the substation.

General Comments:

1. JS said AECOM will share ZTV with OB when it becomes available. There are currently design adjustments being carried out, which require completion in order to produce a useful ZTV.
2. JS confirmed that OS base maps and/or aerial photography will be used for final GIS figures and maps at a more legible scale.
3. RW confirmed that substation and BESS layout and locations are still being developed. Details will be made available to OB once design is fixed in order to review potential other viewpoints.
4. Off-site substation at Cottam: RW suggested that only minor works at this location are now proposed (busbars on existing substation, rather than a whole new substation).
5. Meeting next week: OB attending, Neil from council and then people from Cottam and West Burton. OB mentioned he is having a discussion tomorrow (similar to what we have done in this meeting).
6. Route corridor options: RW mentioned that corridor options have been reduced to one selected route option and the RLB for the site is currently being updated to reflect a circa 200m working width, which will be published at PEIR.
7. Hemswell Cliff – JS asked OB potential viewpoints / photomontages from this location. OB confirmed this can be ruled out.
8. OB mentioned that a meeting on site with JS can be arranged if required.



Lea

Willingham Rd

D

B Upto/53/1

C

F1

Upton Rd

Kexby

F2

Knaith Park

Kexby Ln

F3

B Knai/44/2

A

B Knai/44/1

A156

Knaith

Willingham by Stow

I

B1241

River Trent

Normanby by Stow

Gate Burton

E

Littleborough

H

A156

Normanby by Stow

B1241

G

Marton

Stow Park Rd

Stow

Sturton Rd

F4

Coates

Trent Port

High St

Minutes

Meeting name	Subject	Attendees
Gate Burton Solar Farm	Review of site visit following photomontages suggested by Lincolnshire County Council	OB - Oliver Brown (on behalf of LCC) KB – Kathryn Blade (AECOM)

Meeting date	Time
04.08.2022	11:00am

Location	Prepared by
MS TEAMS	Kathryn Blade

Viewpoint/ Site-Visit walkthrough discussion:

- KB reviews viewpoint locations proposed by OB on behalf of Lincolnshire County Council (LCC).
- KB presented findings of the site visit and showed viewpoint location photography. (Presentation Attached)
- KB, together with OB, went through individual viewpoints to progress to photomontages/verified photography.
- OB confirms the final selection of the additional viewpoints for photomontages.

Summary of individual viewpoint review (Viewpoint numbering corresponds to attached presentation slides):

- Viewpoint 1: PRoW Footpath Stow/71/2 - Viewpoint 1 will not have a view of the Solar Park - No Photomontage Suggested. **AGREED**
- Viewpoint 2: PRoW Restricted Bridleway; Stow/70/1 - Viewpoint 2 may have a glimpse of the upper parts of the solar panels from this viewpoint, however, this is the only gap in vegetation along this PRoW. Photomontage Suggested. **AGREED**
- Viewpoint 3: PRoW Public Footpath; Kexb/58/1 - Viewpoint 3 will not have a view of the solar park due to screening provided by the field boundaries seen in this image. No Photomontage is Suggested. **AGREED**
- Viewpoint 4: PRoW Carriageway; Upton/N013 - Viewpoint 4 will have a close distance view of the solar panels from this viewpoint. Photomontage Suggested. **AGREED**
- Viewpoint 5: PRoW Footpath; Upton/53/1 - Viewpoint 5 will have a close distance view of the solar panels from this viewpoint, it will however be a brief view due to the screening seen within this image. Photomontage Suggested. **AGREED**
- Viewpoint 6: Padmoor Lane - Viewpoint 6 will not have a view of the solar park due to screening provided by the vegetation along the field boundaries seen in this image. No Photomontage is Suggested. **AGREED**
- Viewpoint 7: Knaith Park PRoW - Knai/44/1 - Viewpoint 7 will not have a view of the solar park due to screening provided by the field boundaries seen in this image. No Photomontage is Suggested. **AGREED**
- Viewpoint 8: Station Road - Viewpoint 8 will have a view of the solar park at this viewpoint. Photomontage Suggested. **AGREED**
- Viewpoint 9: B1241 - Viewpoint 9 will have a view of the upper elements of the solar park at this viewpoint. Photomontage Suggested. **AGREED**

- Viewpoint 10: Moorhouse Farm PRow Public Footpath; Lea/1056/1 - Viewpoint 10 will not have a view of the solar park at this location given the screening by vegetation seen in this viewpoint. No Photomontage is Suggested. **AGREED**
- Viewpoint 11: B1241 - Viewpoint 11 will have a view of the upper elements of the solar park at this viewpoint. Photomontage Suggested. **AGREED**
- Viewpoint 12: Park Plantation PRow Public Footpath; Knai/44/2 - Viewpoint 12 will have a view of the solar farm at this location. No site photography was captured. Photomontage Suggested. **AGREED NOT TO DO A PHOTOMONTAGE DUE TO SAFETY/ACCESSIBILITY ISSUES.**
- Viewpoint 13: Marton PRow Public Footpath; Mton/69/1 - Viewpoint 13 will have a view of the solar park at this viewpoint. Photomontage Suggested. **AGREED**
- Viewpoint 14: Littleborough Tow Path - Viewpoint 14 may have a view of the upper elements of the solar park at this viewpoint. Photomontage Suggested. **AGREE**

General Comments:

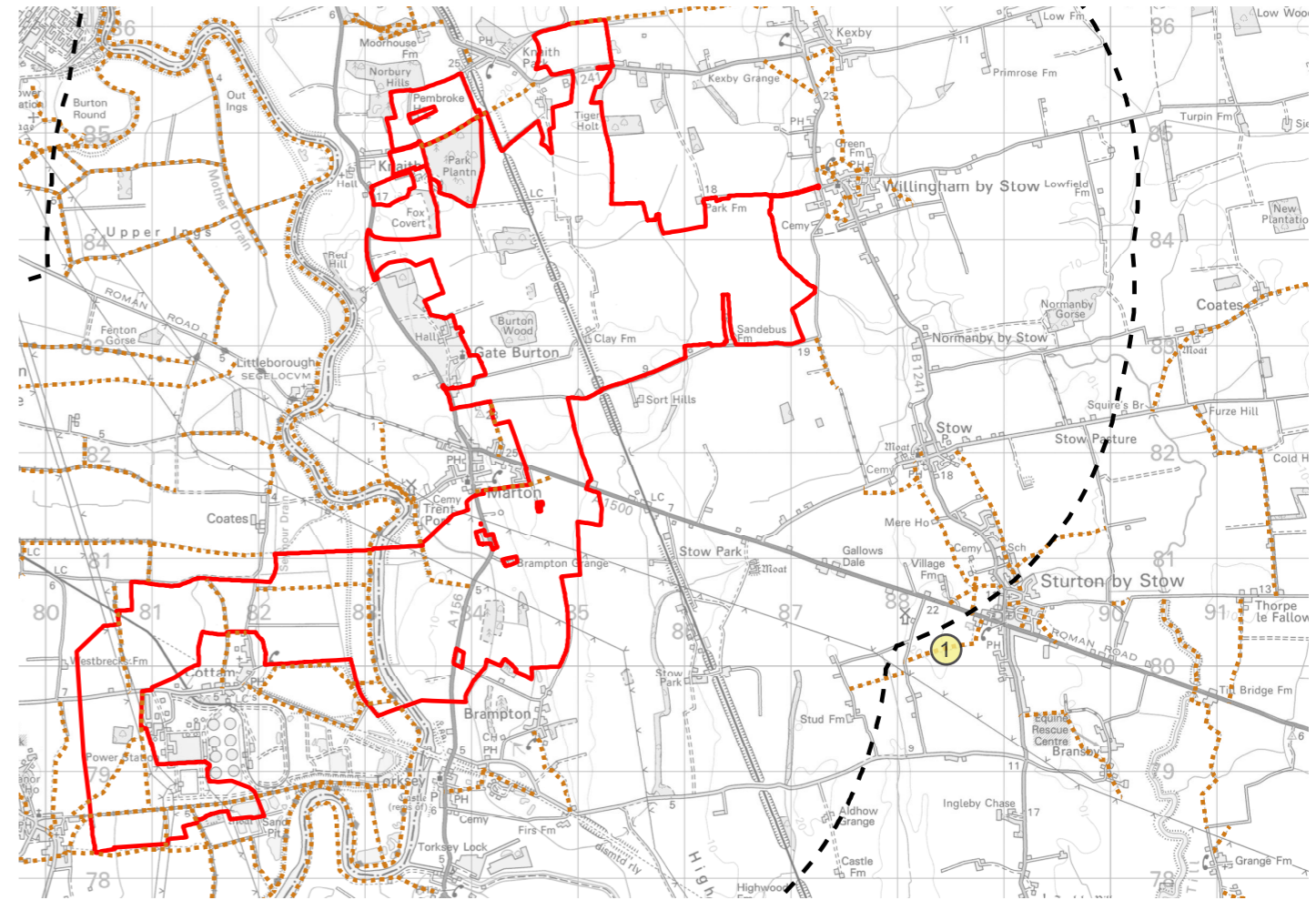
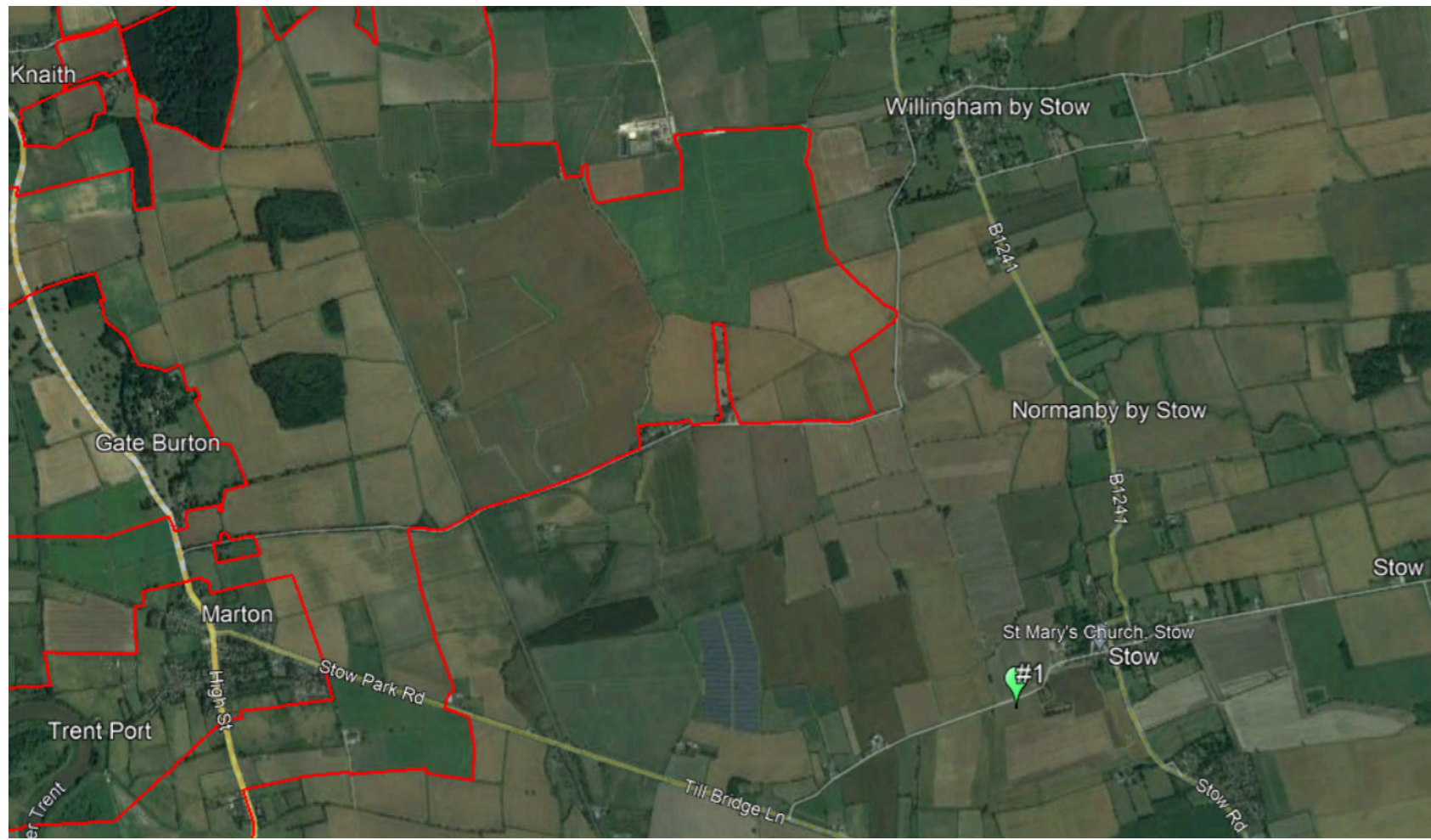
1. Substation and Taller Elements: OB mentioned concern for the taller elements of the solar park, i.e., substations creating more significant impacts. However, OB is happy with the wide spread of viewpoints which will indicate the extent of the visibility for these elements.
2. Presentation Layout: OB commended the layout and format of the presentation, showing where the viewpoint is in relation to the RLB and PRow network is very useful.
3. Northern Construction Road Viewpoint: OB suggested a view showing the construction road access along the A156. KB raised the point that there is a viewpoint nearby (Viewpoint 13 of the original selection) which is located quite close to the construction road access.
4. KB mentioned the cumulative projects and queried how to go about this assessment given the scale of the projects in consideration. OB commented on this as an unprecedented scenario and will help with meetings and correspondence if needed. OB also offered further meetings on this specific topic if required.

Gate Burton Energy Park



Lincolnshire County Council (LCC) - Additional Viewpoints

Viewpoint 1: PRow Footpath Stow/71/2



Viewpoint 1 - Located along a Public Right of Way Footpath south of Stow Park Road. Viewpoint located approximately 1.5km from the nearest solar park boundary.

Location of Viewpoint 1 in relation to the PRow network.



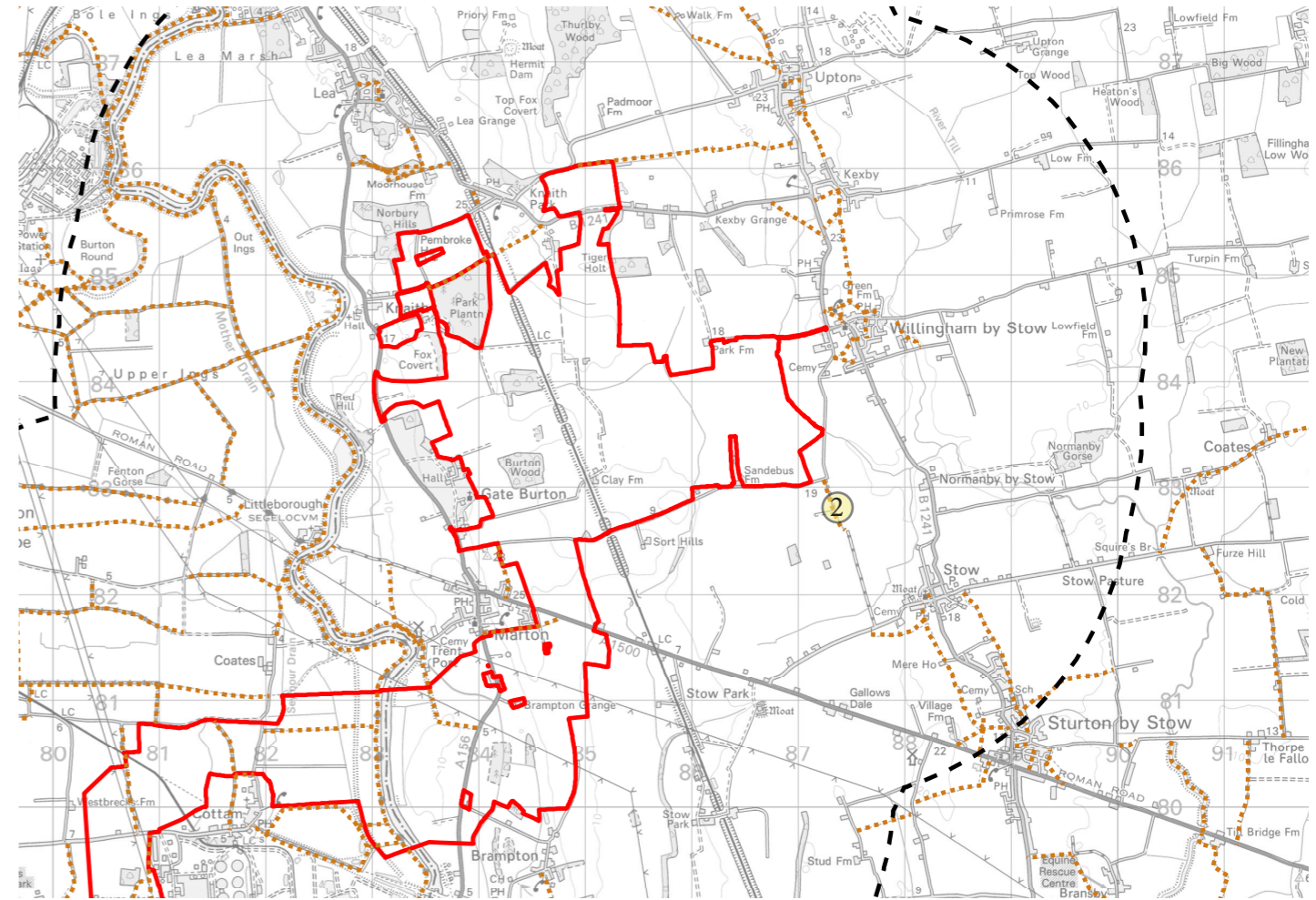
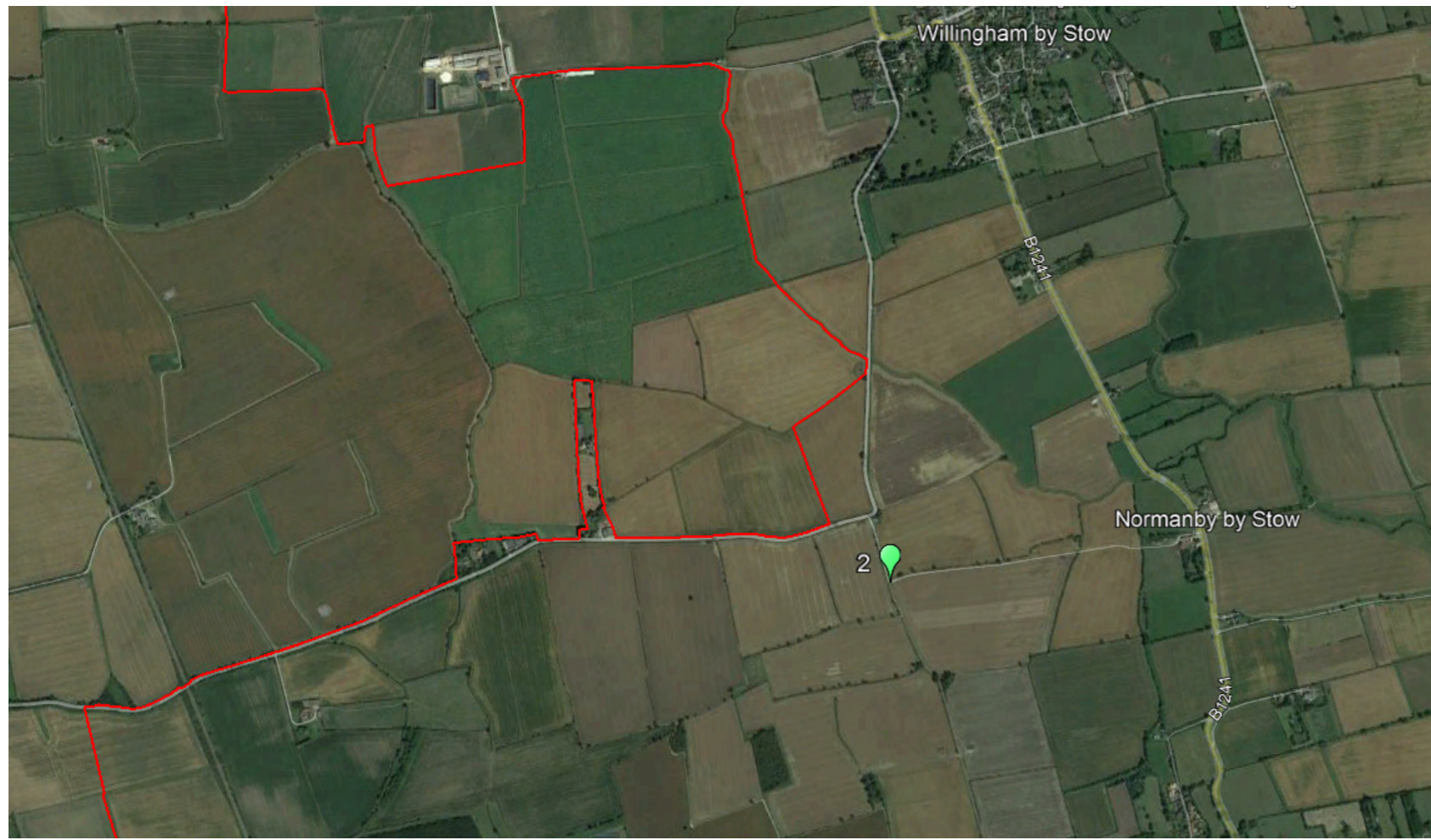
Viewpoint 1 will not have a view of the Solar Park - No Photomontage Suggested.

Gate Burton Energy Park



Lincolnshire County Council (LCC) - Additional Viewpoints

Viewpoint 2: PRow Restricted Bridleway; Stow/70/1



Viewpoint 2 - Located along a Public Right of Way Footpath west of Normandy by Stow. Viewpoint located approximately 230m from the nearest solar park boundary.

Location of Viewpoint 2 in relation to the PRow network.

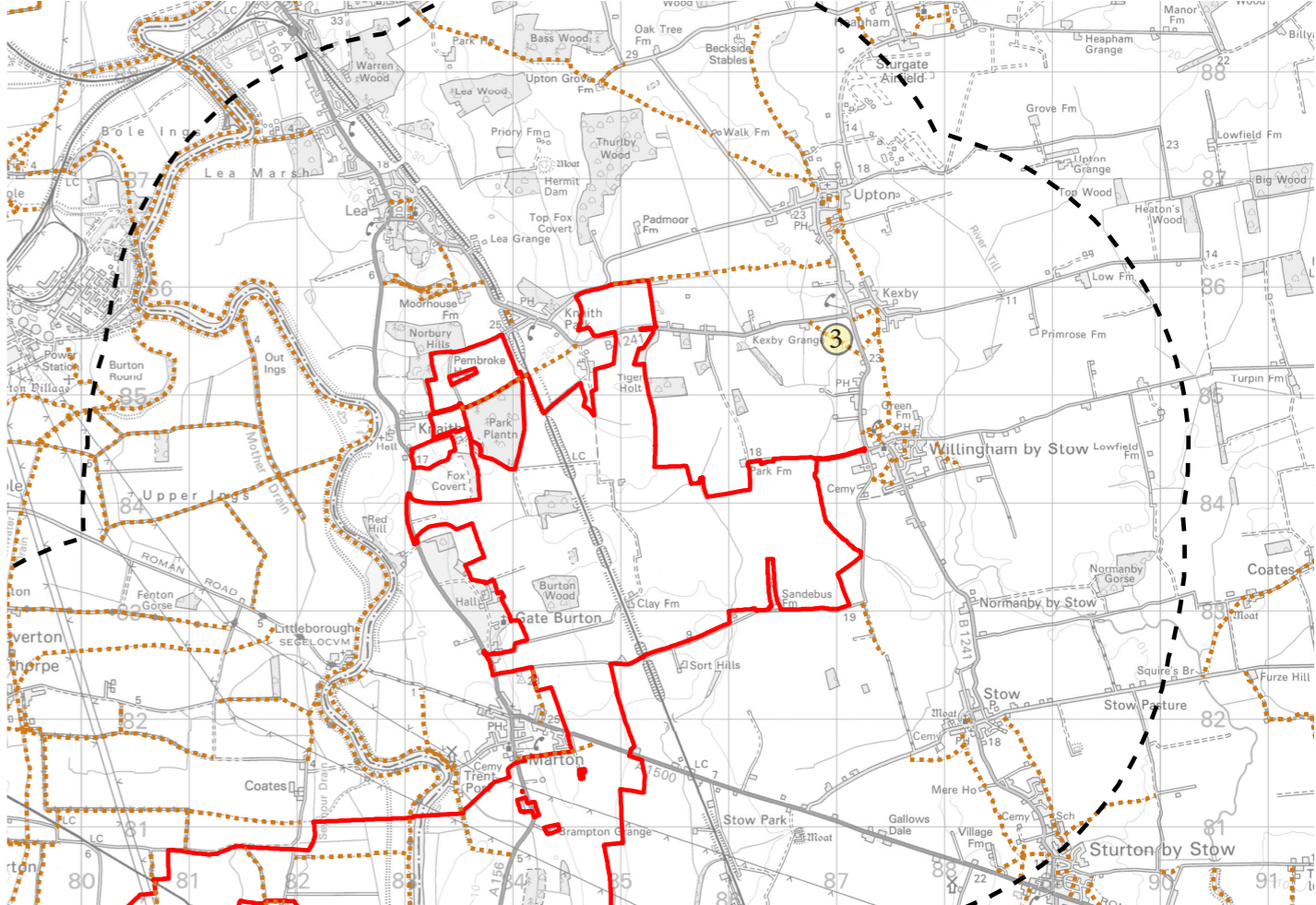
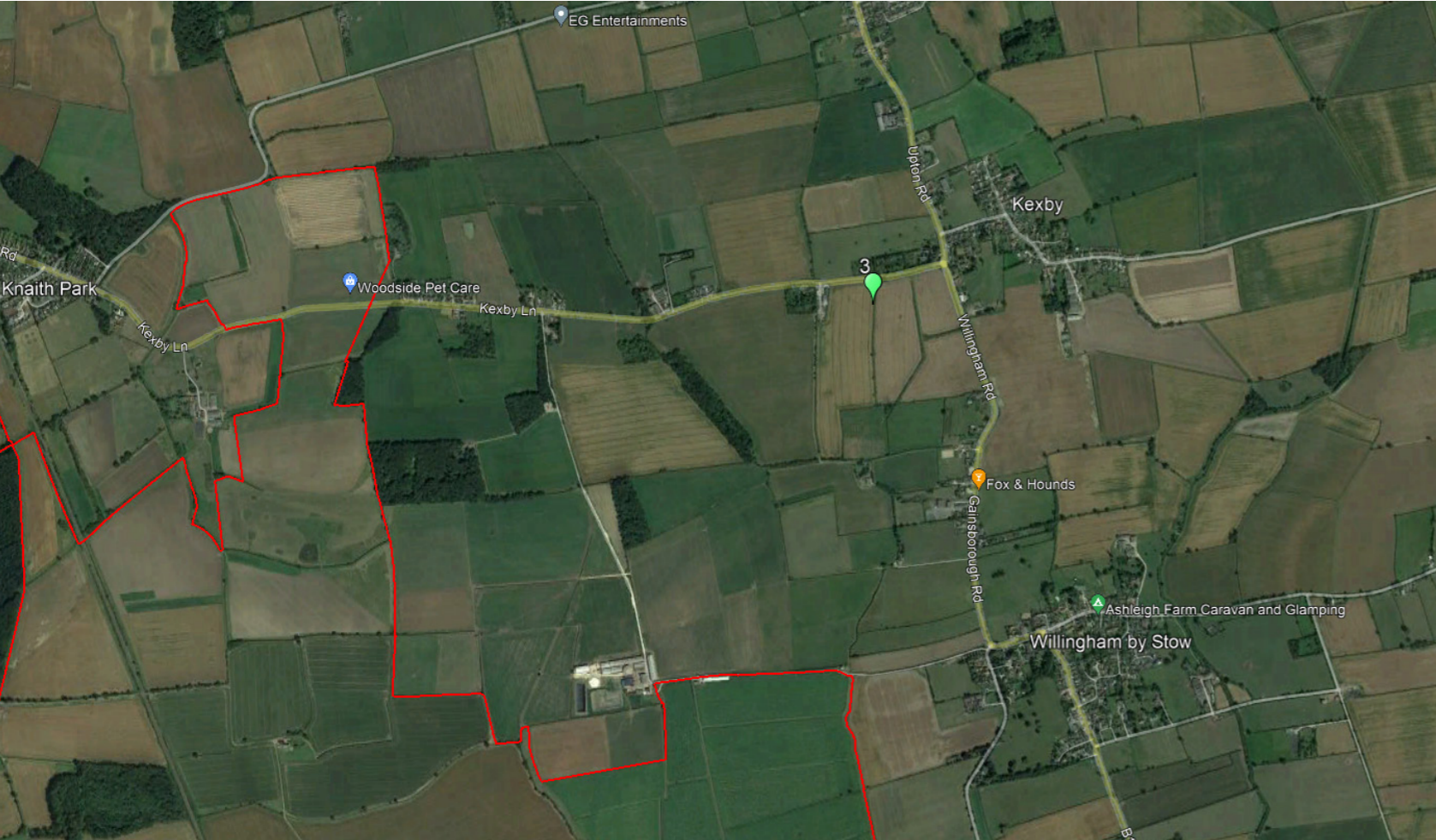


Viewpoint 2 may have a glimpse of the upper parts of the solar panels from this viewpoint, however, this is the only gap in vegetation along this PRow. **Photomontage Suggested.**

Gate Burton Energy Park

Lincolnshire County Council (LCC) - Additional Viewpoints

Viewpoint 3: PRoW Public Footpath; Kexb/58/1



Viewpoint 3 - Located along a Public Right of Way Footpath south of Kexby Lane. Viewpoint located approximately 1.2km from the nearest solar park boundary.

Location of Viewpoint 3 in relation to the PRoW network.

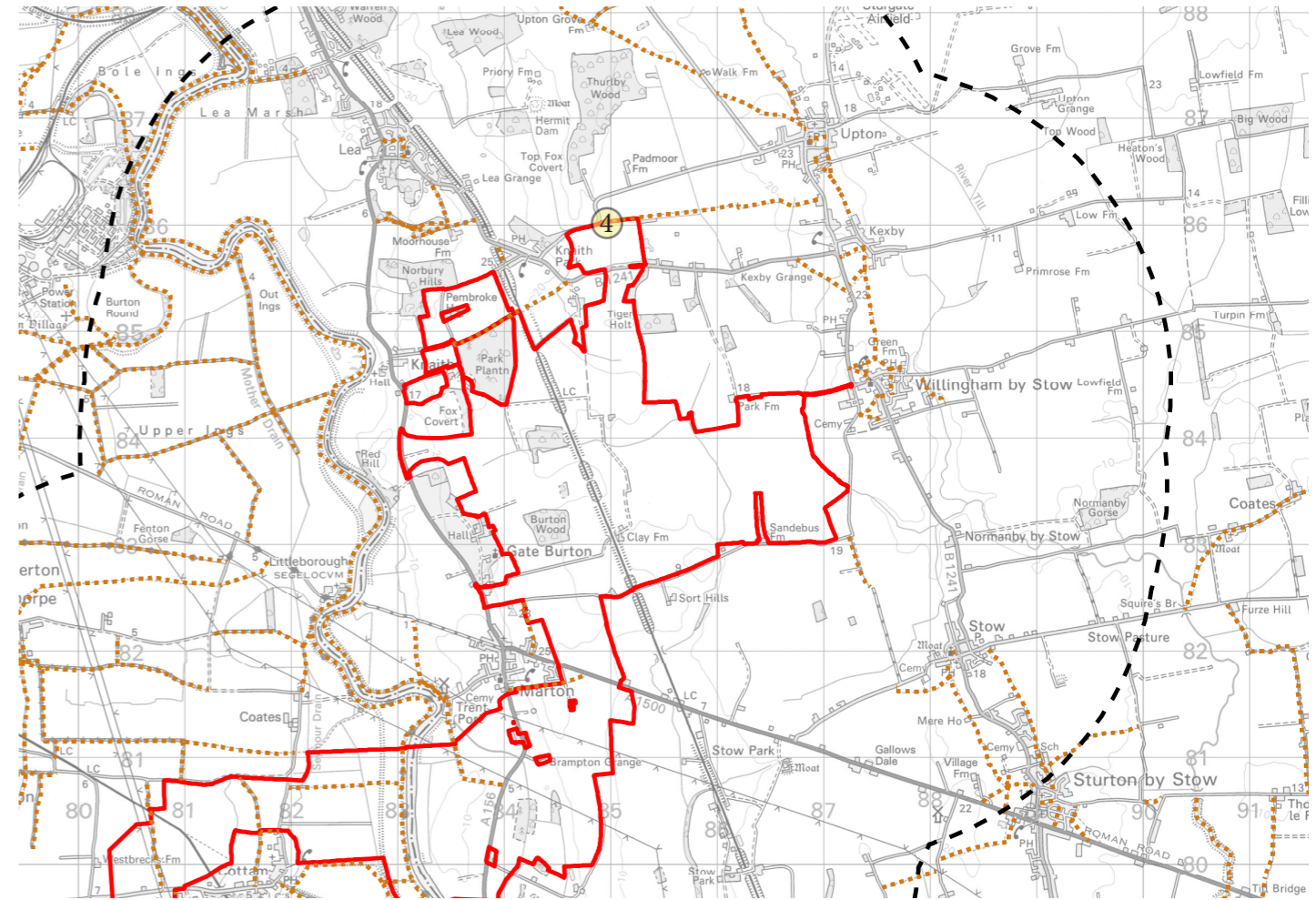
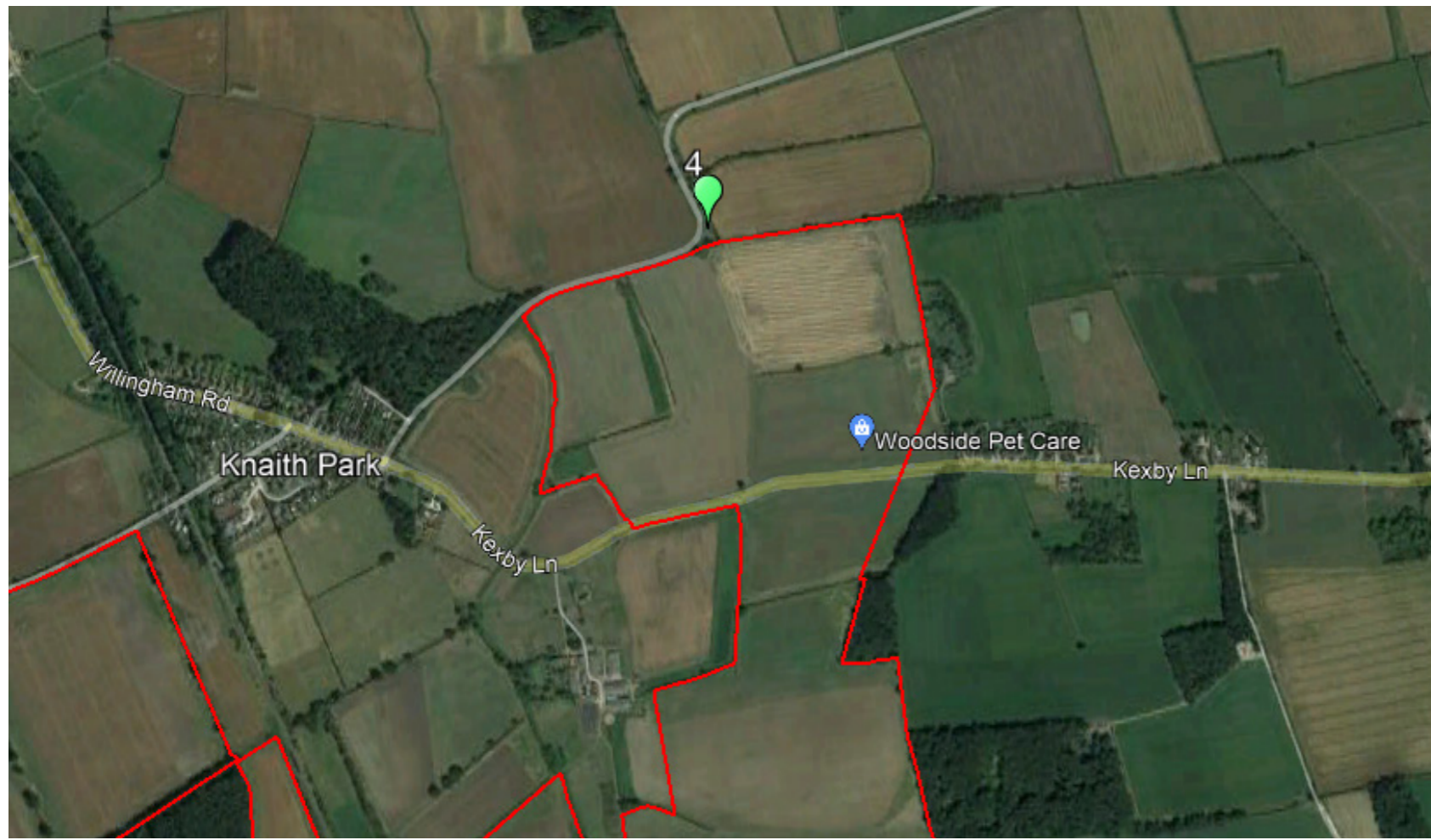


Viewpoint 3 will not have a view of the solar park due to screening provided by the field boundaries seen in this image. **No Photomontage Suggested.**

Gate Burton Energy Park

Lincolnshire County Council (LCC) - Additional Viewpoints

Viewpoint 4: PRow Carriageway; Upton/N013



Viewpoint 4 - Located along the Upton Road.
Viewpoint located approximately 30m from the nearest solar park boundary.

Location of Viewpoint 4 in relation to the PRoW network.



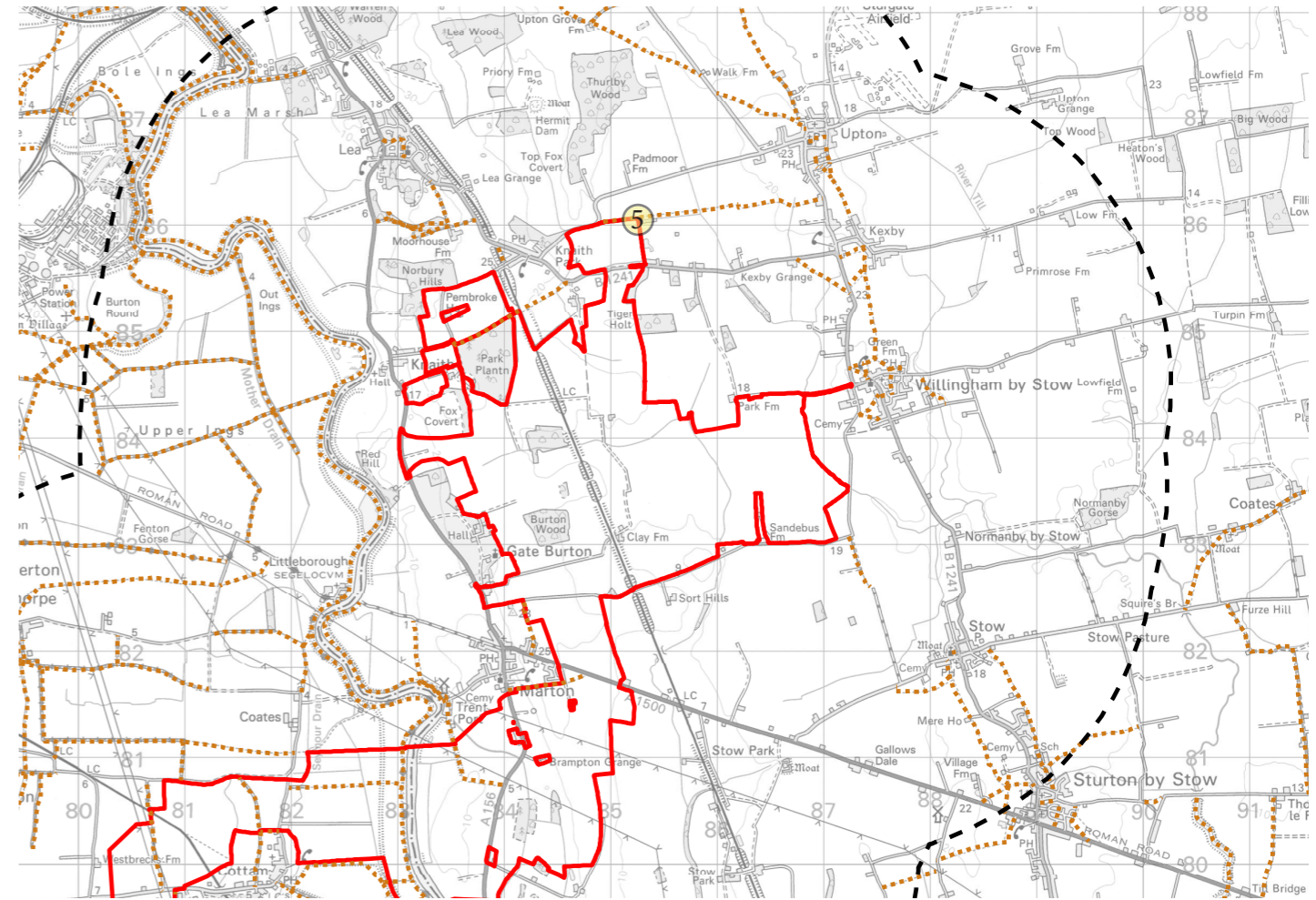
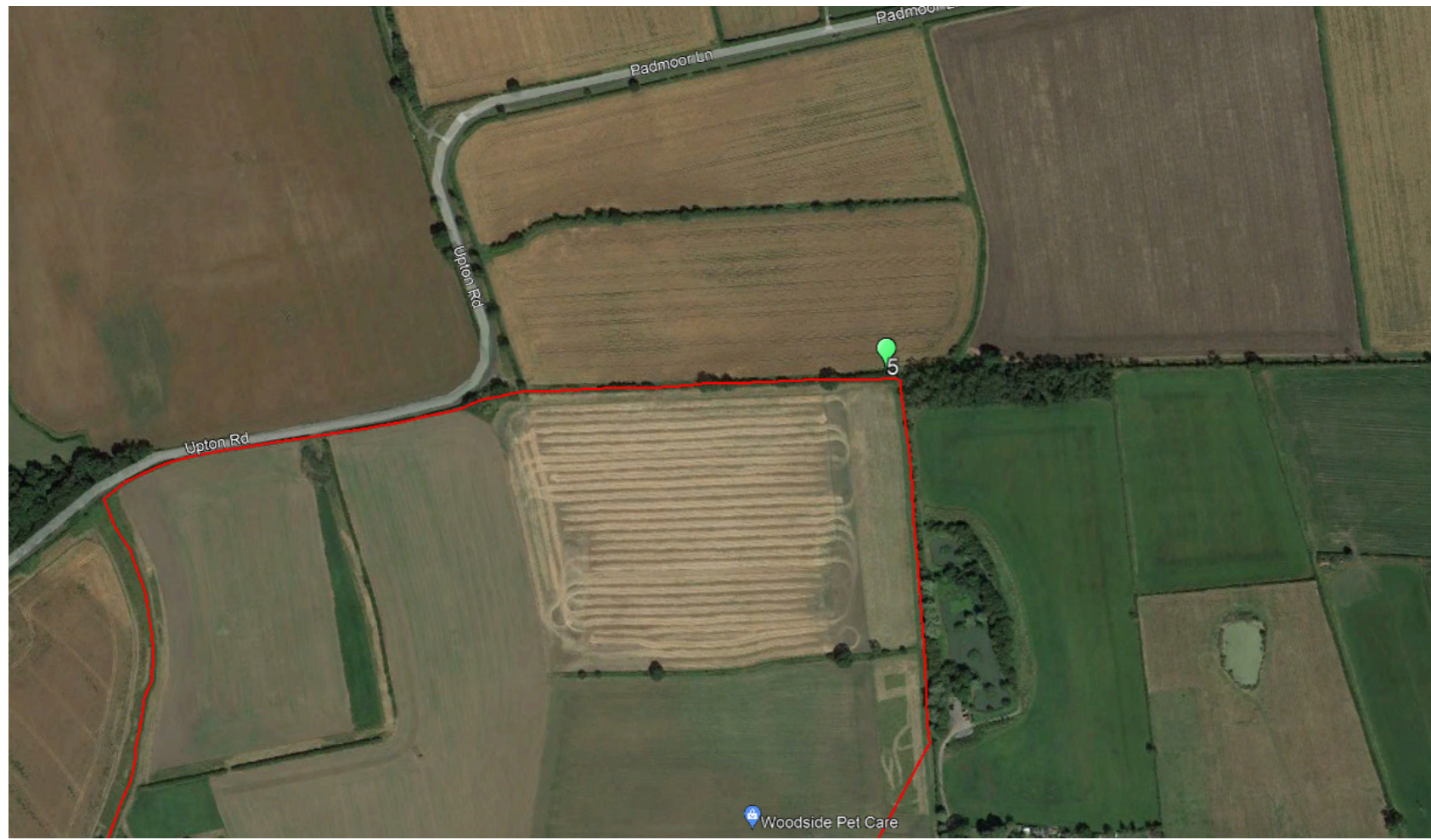
Viewpoint 4 will have a close distance view of the solar panels from this viewpoint.
Photomontage Suggested.

Gate Burton Energy Park



Lincolnshire County Council (LCC) - Additional Viewpoints

Viewpoint 5: PRow Footpath; Upton/53/1



Viewpoint 5 - Located along the a PRow south and east of Upton Road. Viewpoint located along the northern solar park boundary.

Location of Viewpoint 5 in relation to the PRow network.



Viewpoint 5 will have a close distance view of the solar panels from this viewpoint, it will however be a brief view due to the screening seen within this image.

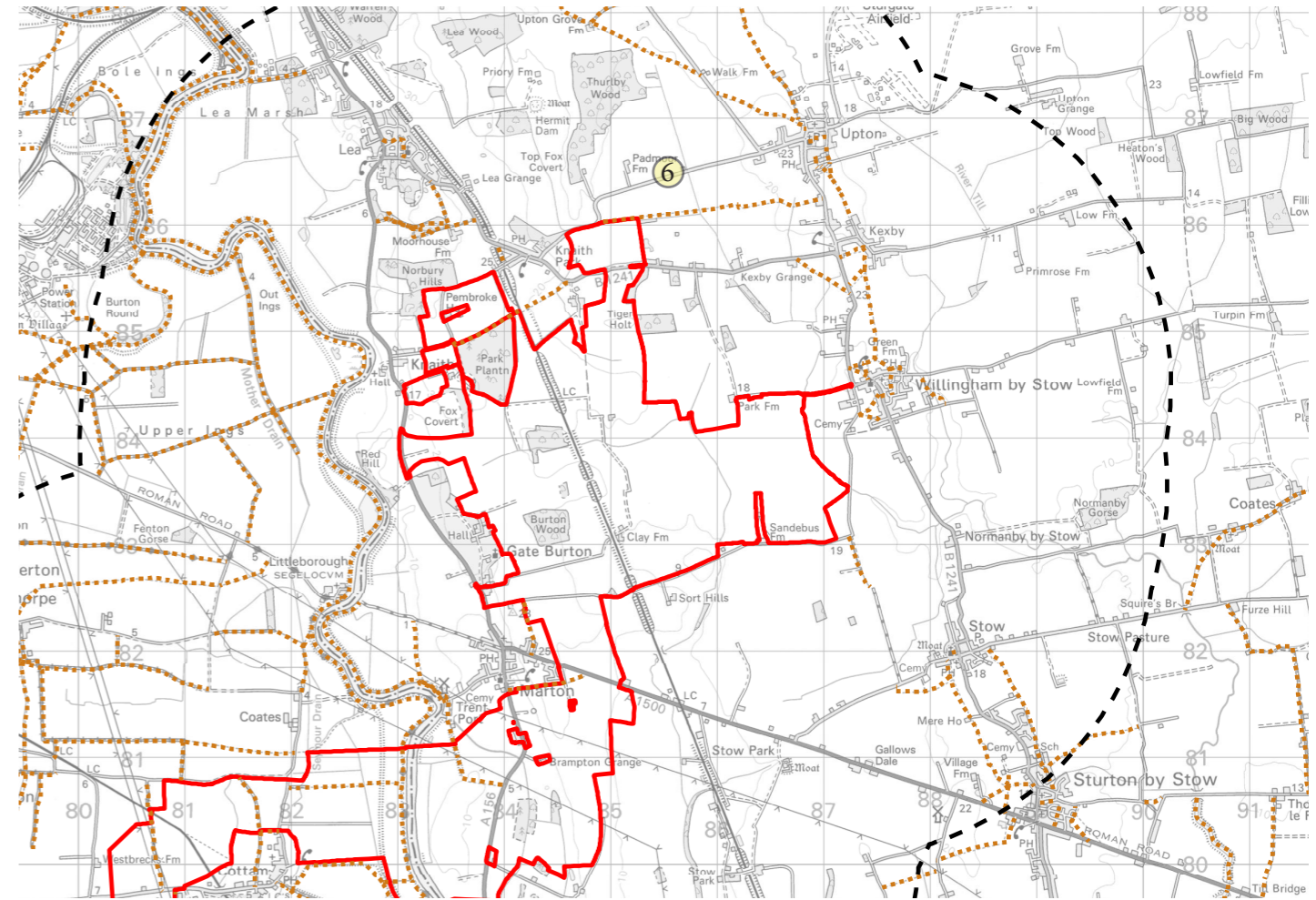
Photomontage Suggested.

Gate Burton Energy Park



Lincolnshire County Council (LCC) - Additional Viewpoints

Viewpoint 6: Padmoor Lane



Viewpoint 6 - Located along Padmoor Lane, West of Upton. Viewpoint located 500m from the nearest solar park boundary.

Location of Viewpoint 6 in relation to the PRoW network.



Viewpoint 6 will not have a view of the solar park due to screening provided by the vegetation along the field boundaries seen in this image. **No Photomontage Suggested.**

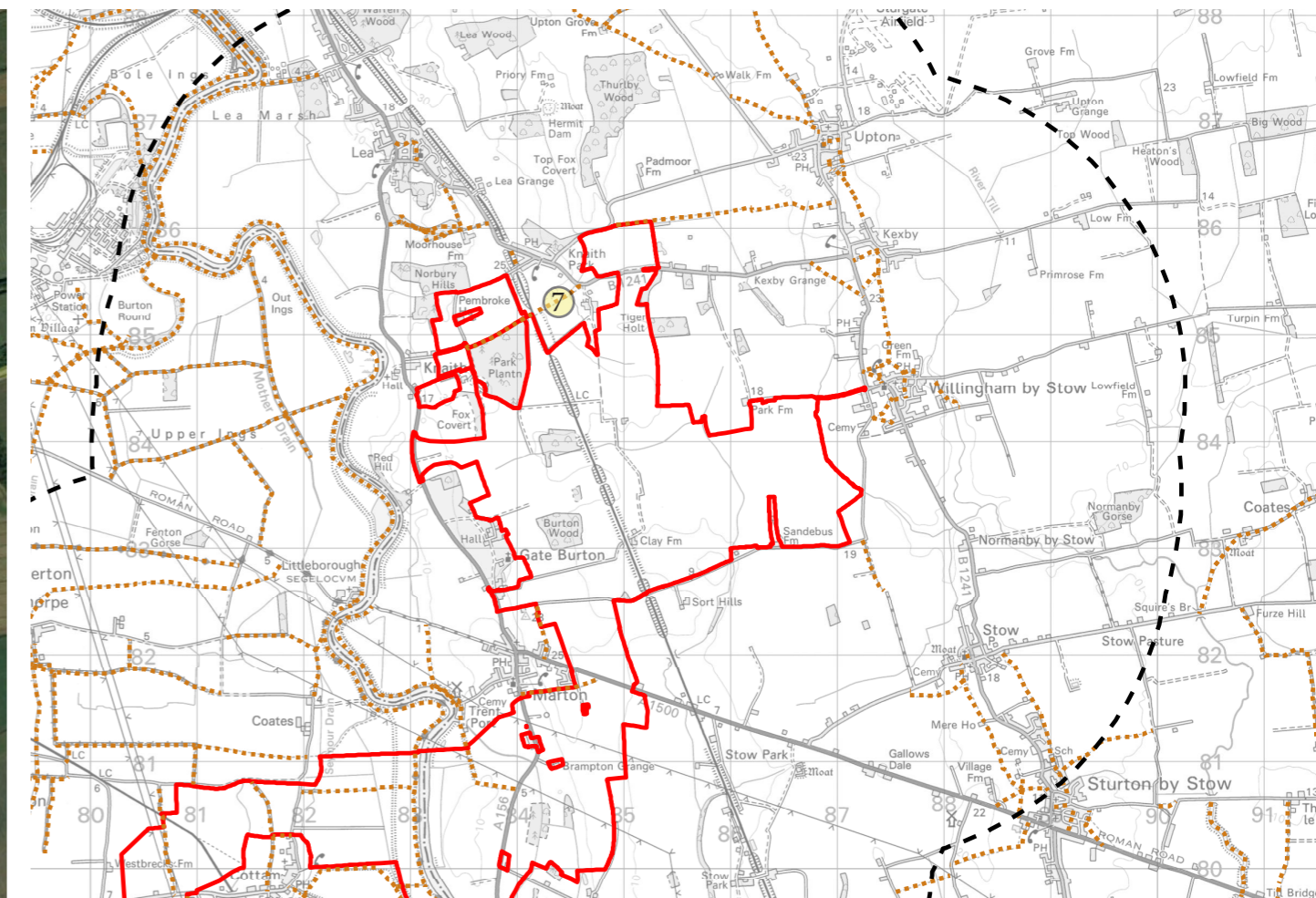
Gate Burton Energy Park

Lincolnshire County Council (LCC) - Additional Viewpoints

Viewpoint 7: Knaith Park PRow - Knai/44/1



Viewpoint 7 - Located south along PRow south of Kexby Lane. Viewpoint located 300m from the nearest solar park boundary.



Location of Viewpoint 7 in relation to the PRow network.

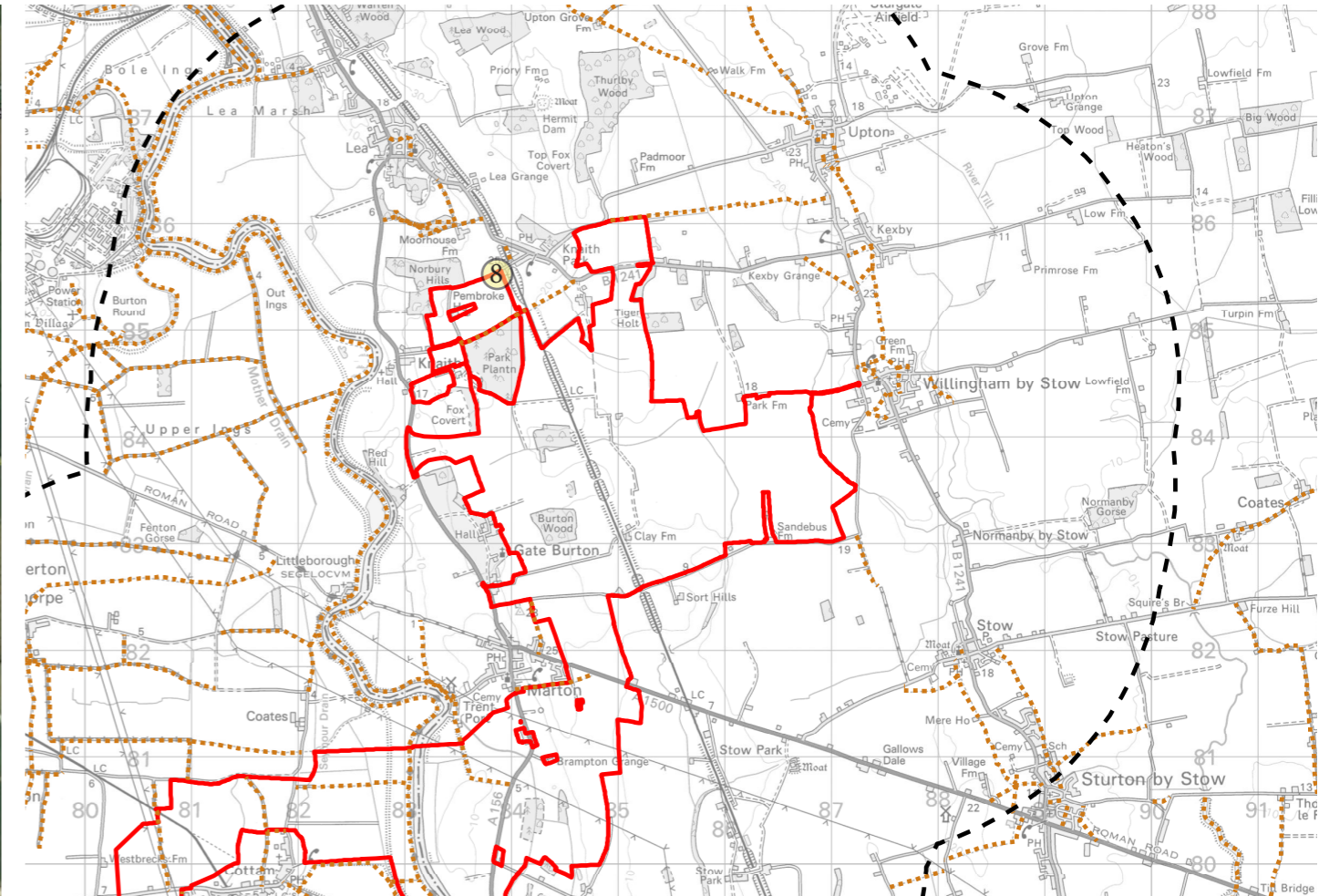


Viewpoint 7 will not have a view of the solar park due to screening provided by the field boundaries seen in this image. **No Photomontage Suggested.**

Gate Burton Energy Park

Lincolnshire County Council (LCC) - Additional Viewpoints

Viewpoint 8: Station Road



Viewpoint 8 - Located along Station Road.
Viewpoint located along the solar park boundary.

Location of Viewpoint 8 in relation to the PRoW network.

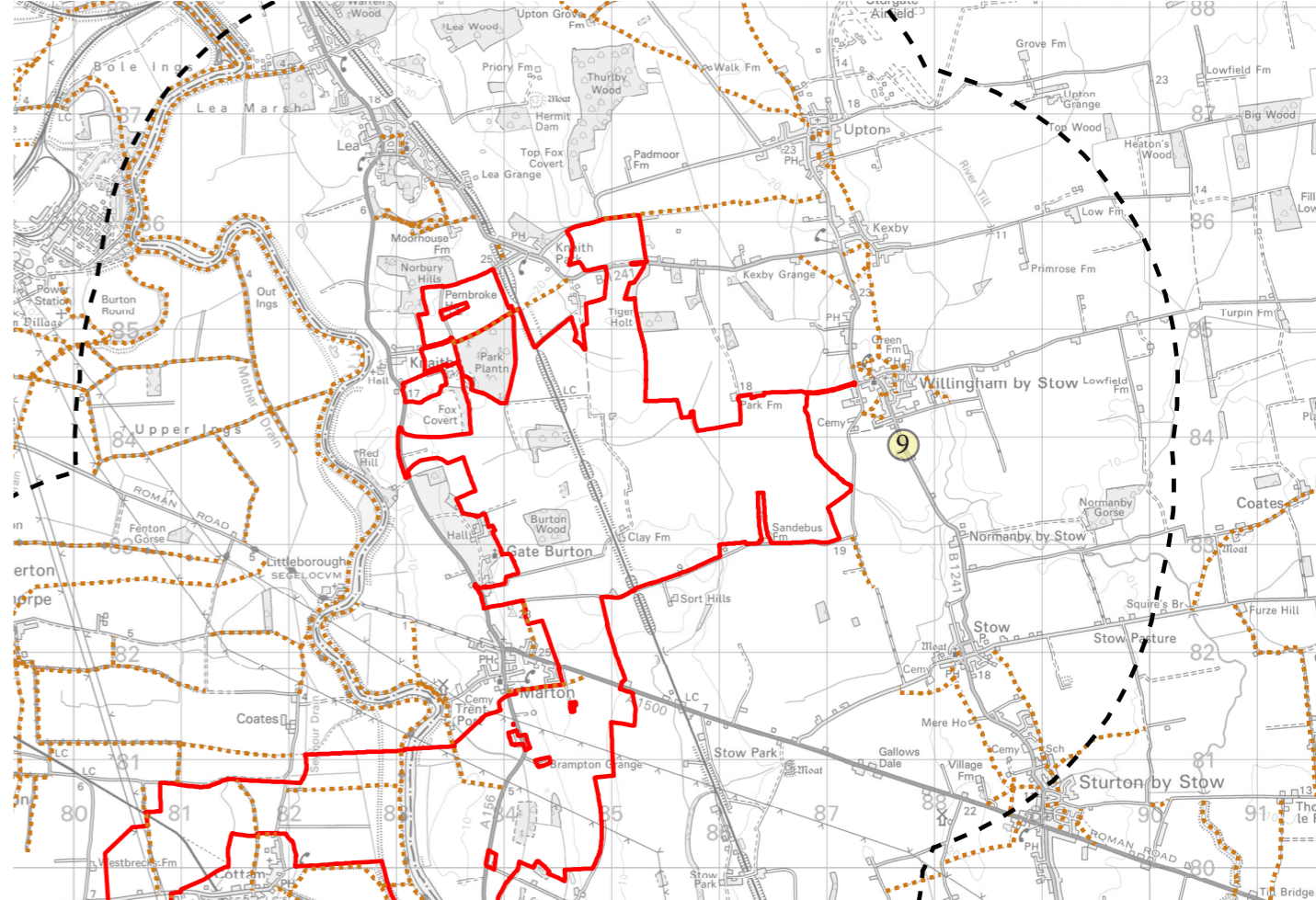
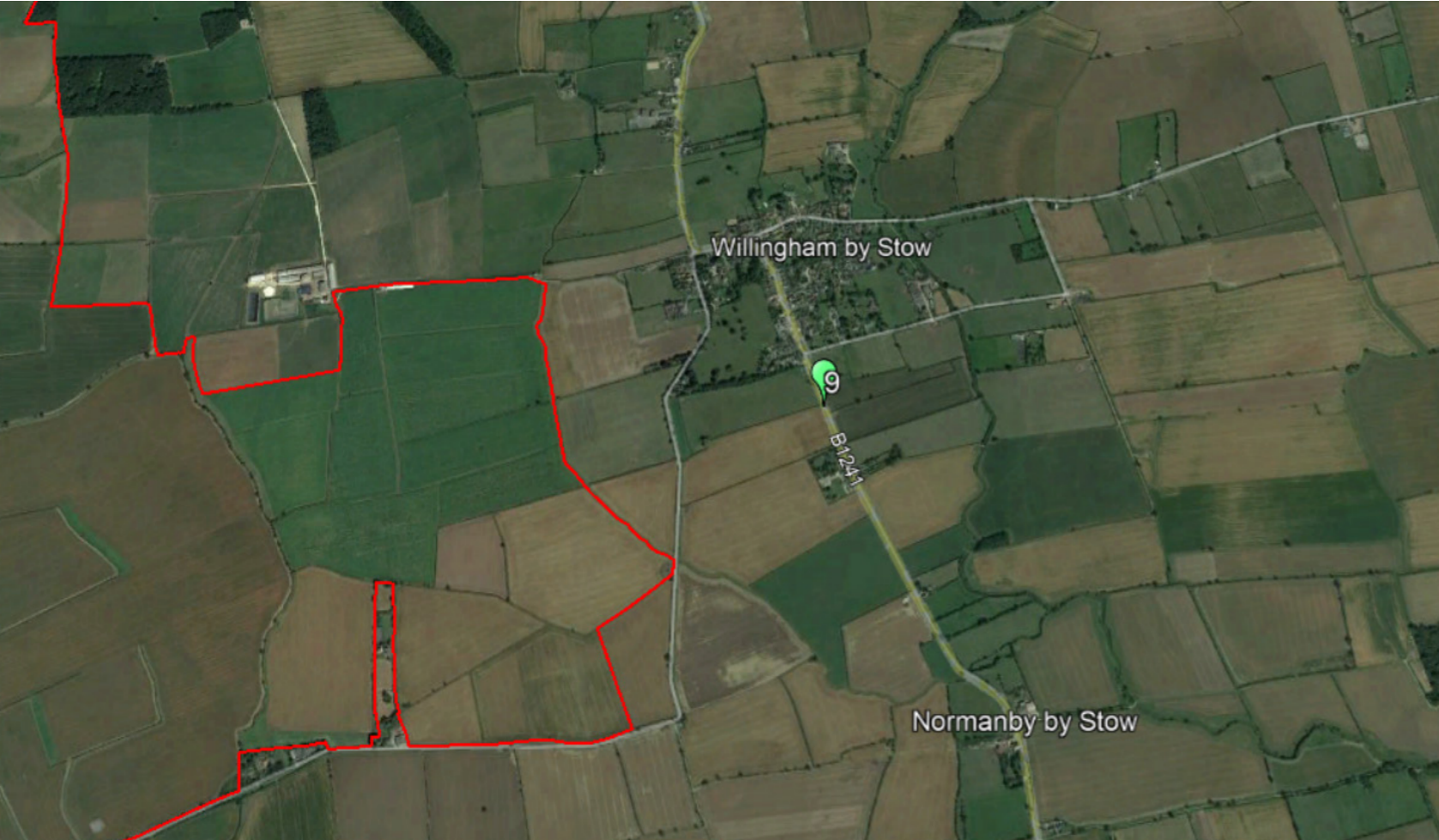


Viewpoint 8 will have a view of the solar park at this viewpoint. **Photomontage Suggested.**

Gate Burton Energy Park

Lincolnshire County Council (LCC) - Additional Viewpoints

Viewpoint 9: B1241



Viewpoint 9 - Located along the B1241 east of the solar park.
Viewpoint located approximately 460m east of the dearest solar park boundary.

Location of Viewpoint 9 in relation to the PRoW network.



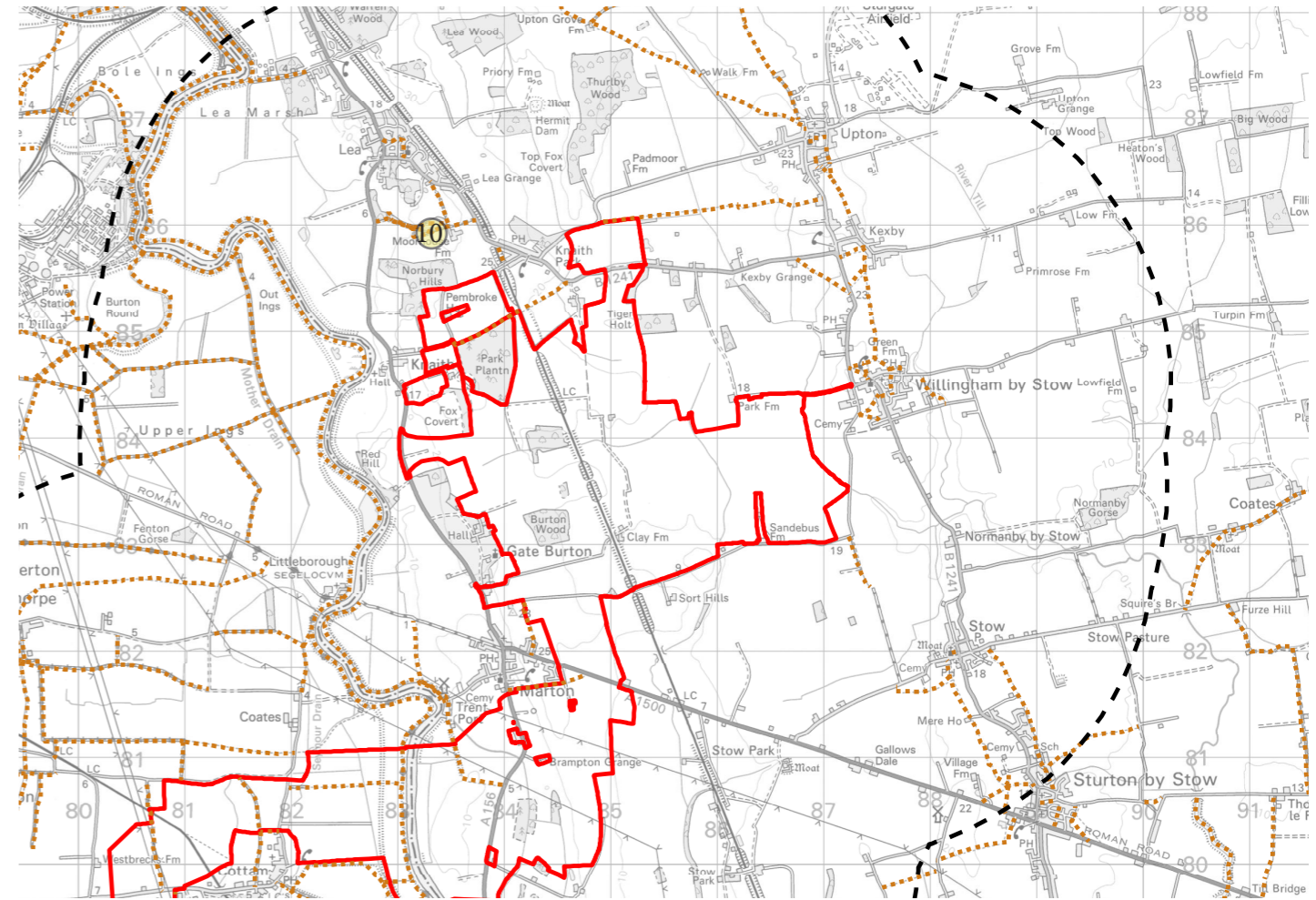
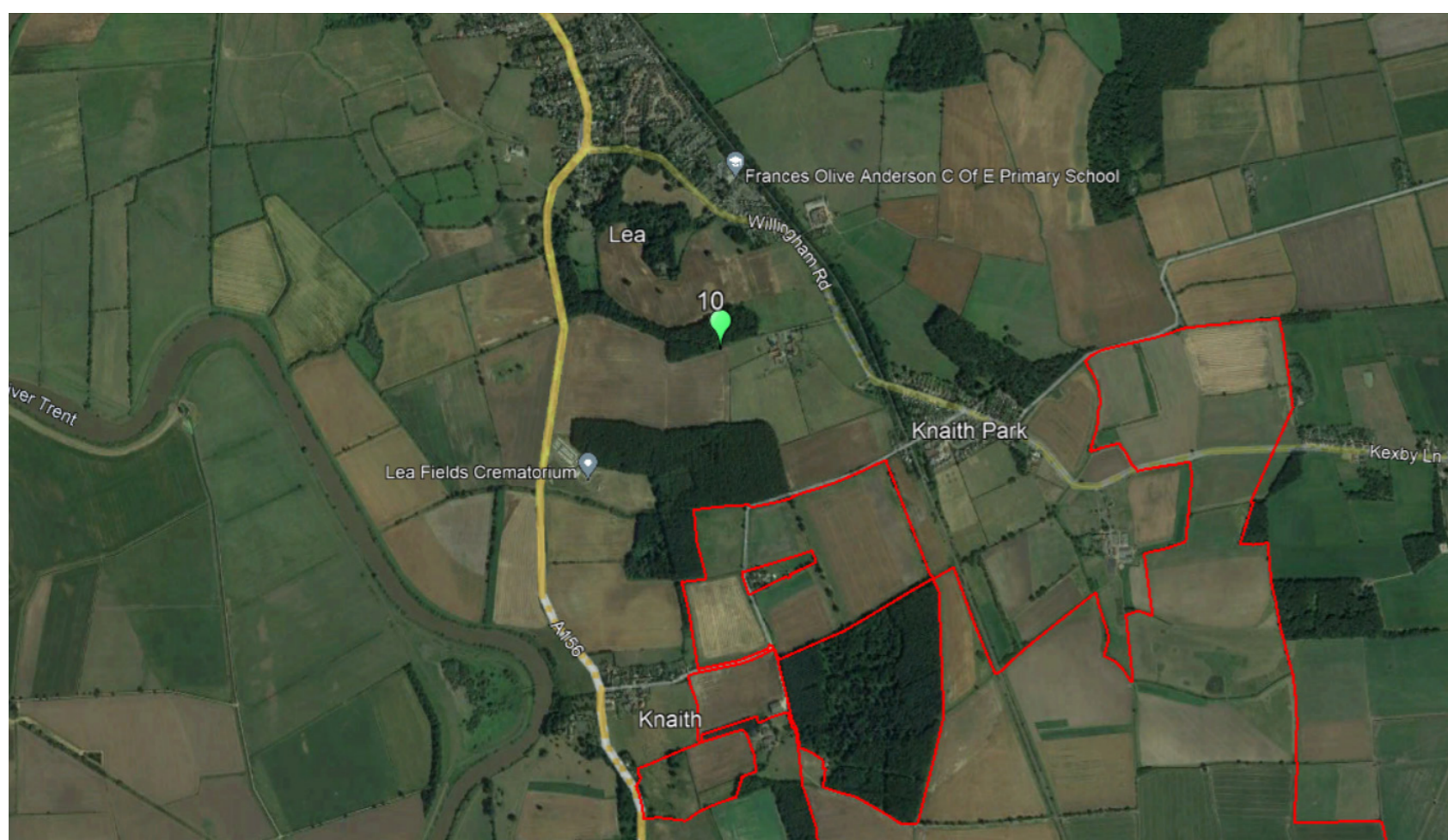
Viewpoint 9 will have a view of the upper elements of the solar park at this viewpoint. **Photomontage Suggested.**

Gate Burton Energy Park



Lincolnshire County Council (LCC) - Additional Viewpoints

Viewpoint 10: Moorhouse Farm PRow Public Footpath; Lea/1056/1



Viewpoint 10 - Located along the public footpath west of Moorhouse Farm. Viewpoint located approximately 500m north of the nearest solar park boundary.

Location of Viewpoint 10 in relation to the PRow network.

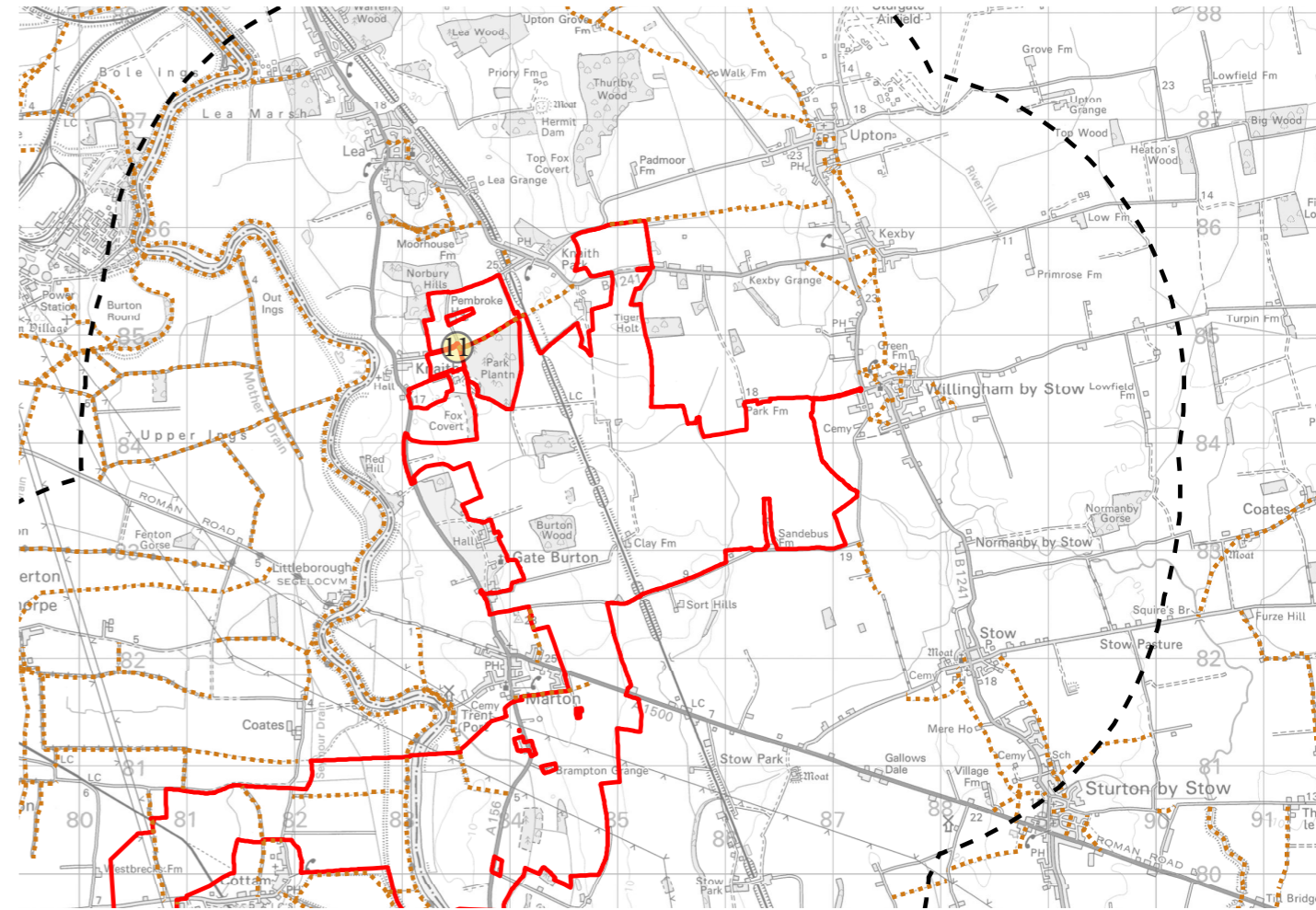
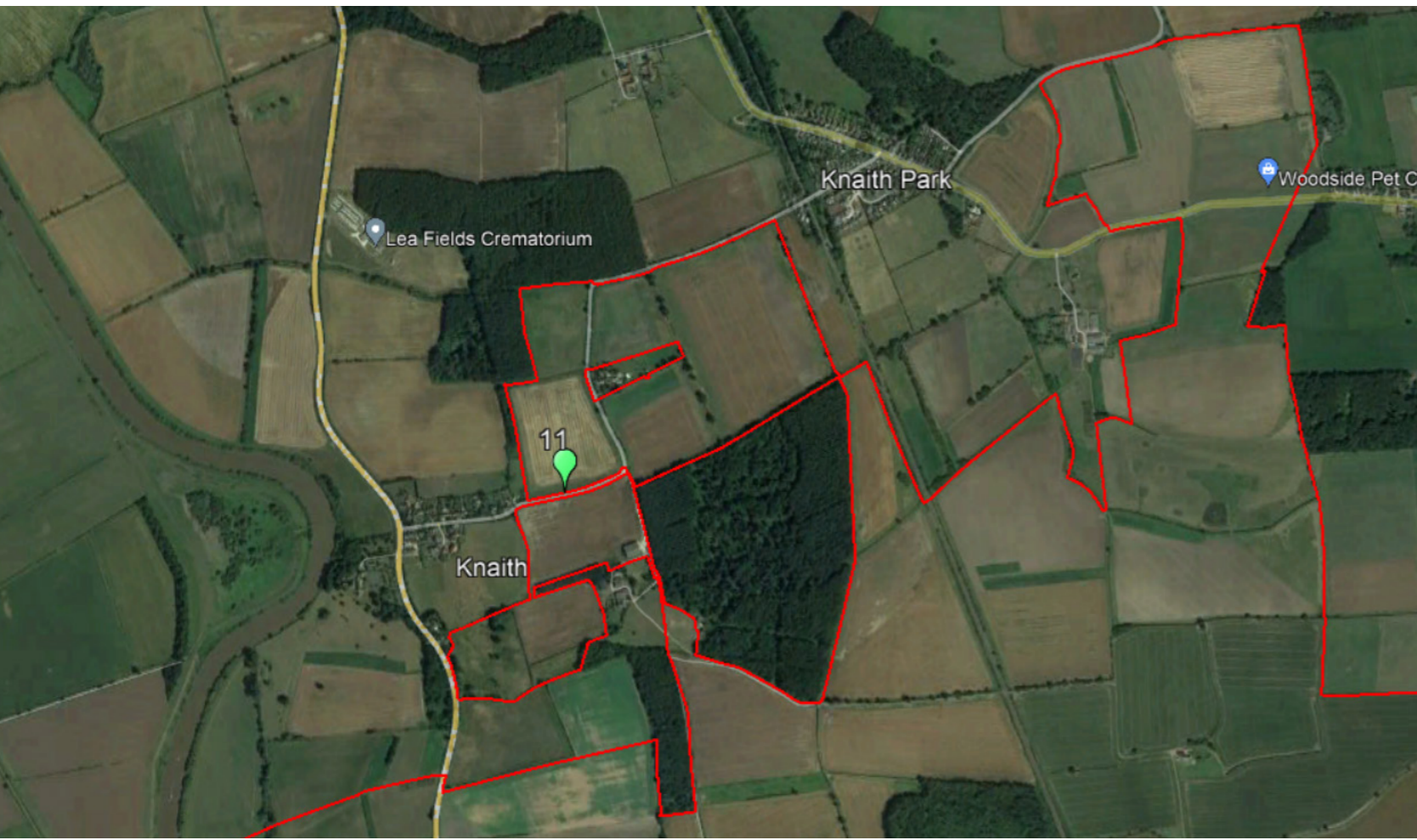


Viewpoint 10 will not have a view of the solar park at this location given the screening by vegetation seen in this view-point. **No Photomontage Suggested.**

Gate Burton Energy Park

Lincolnshire County Council (LCC) - Additional Viewpoints

Viewpoint 11: B1241



Viewpoint 11 - Located along Knaith Hill north of the solar park.
Viewpoint located approximately 10m north of the nearest solar park boundary.

Location of Viewpoint 11 in relation to the PRoW network.



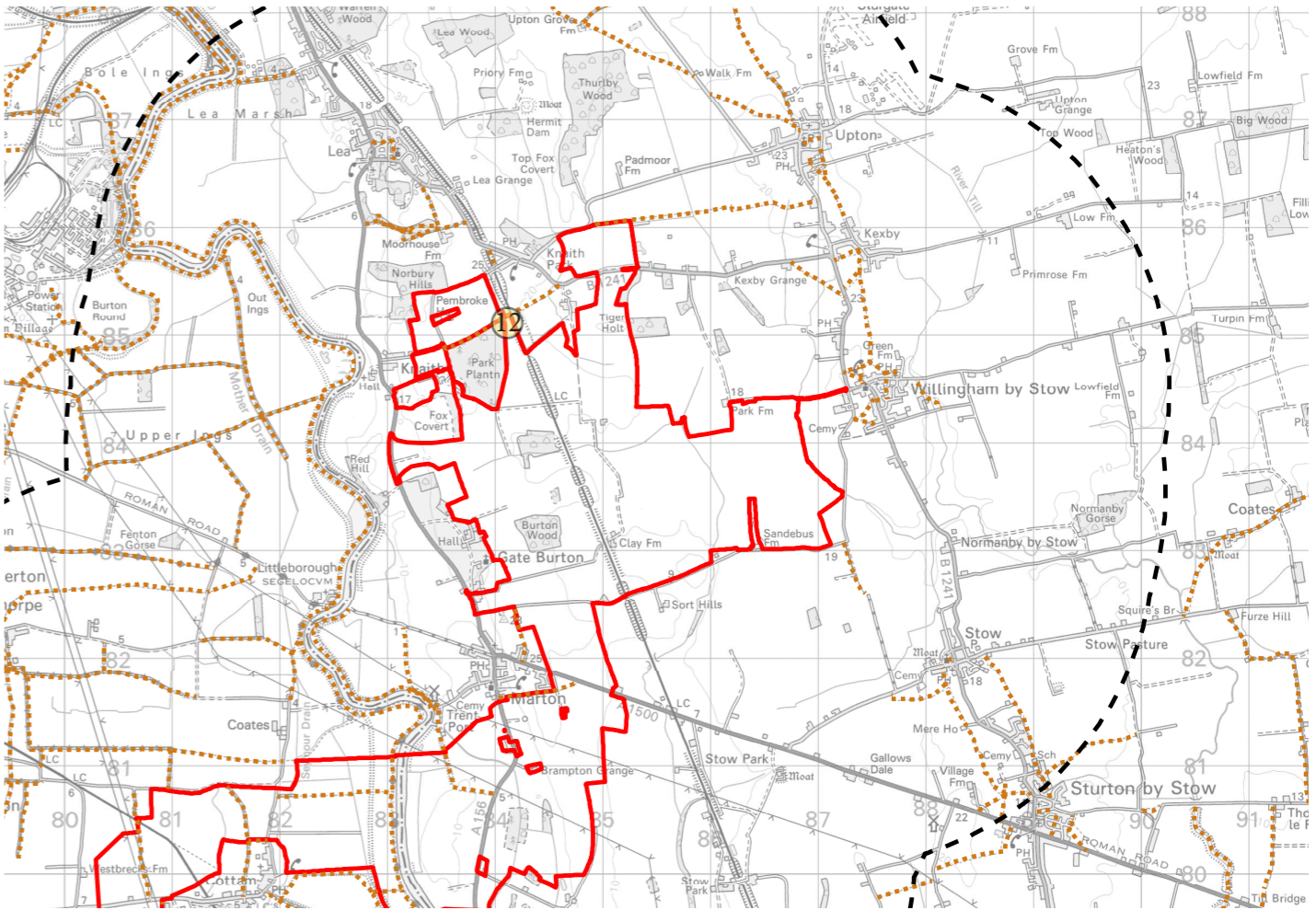
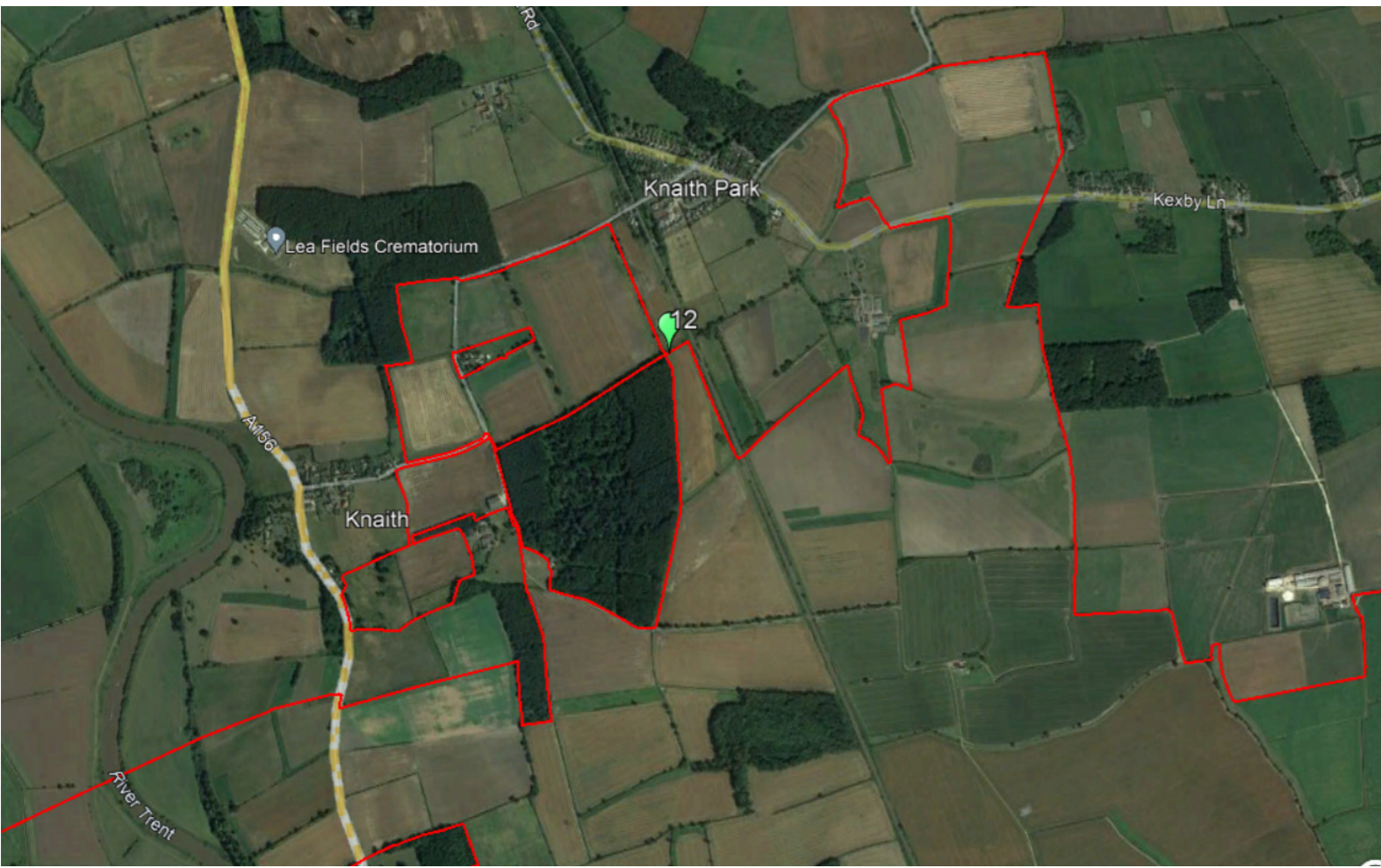
Viewpoint 11 will have a view of the upper elements of the solar park at this viewpoint. **Photomontage Suggested.**

Gate Burton Energy Park



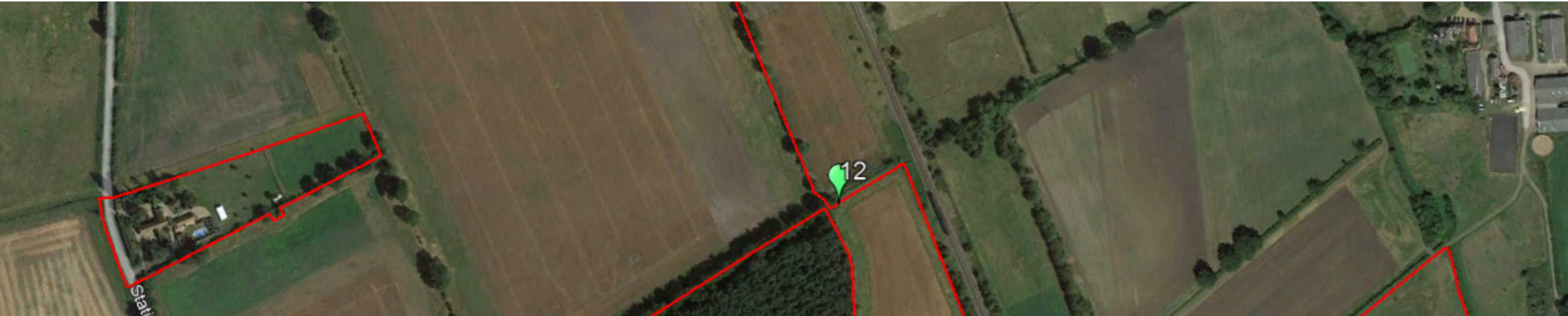
Lincolnshire County Council (LCC) - Additional Viewpoints

Viewpoint 12: Park Plantation PRow Public Footpath; Knai/44/2



Viewpoint 12 - Located along the public footpath north of Park Plantation. Viewpoint located along the boundary of the solar park boundary.

Location of Viewpoint 12 in relation to the PRow network.



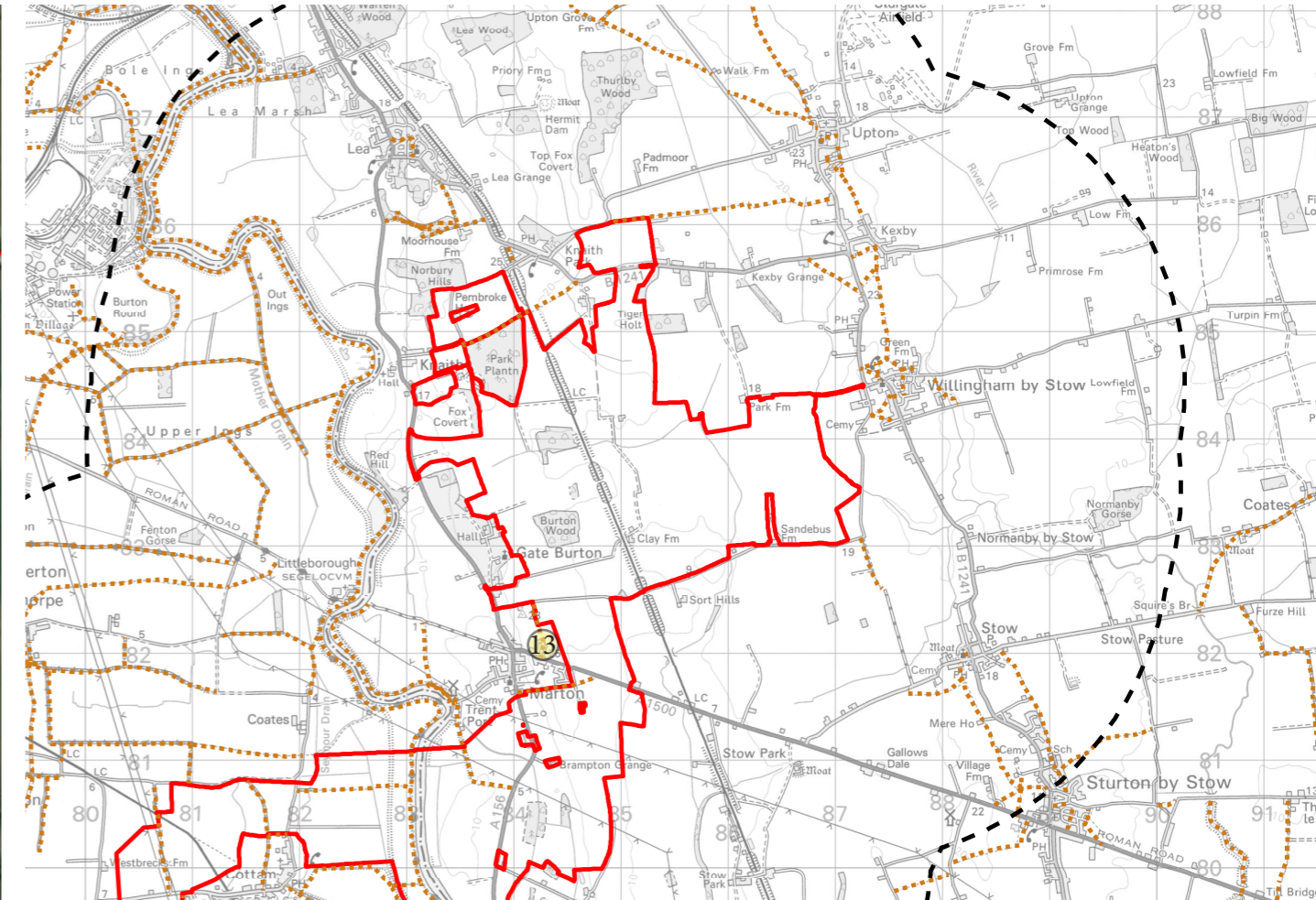
Viewpoint 12 will have a view of the solar farm at this location. No site photography captured.

Photomontage Suggested.

Gate Burton Energy Park

Lincolnshire County Council (LCC) - Additional Viewpoints

Viewpoint 13: Marton PRow Public Footpath; Mton/69/1



Viewpoint 13 - Located along the PRow north of Stow Park Road.
Viewpoint located approximately 160m west of the nearest solar park boundary.

Location of Viewpoint 13 in relation to the PRow network.

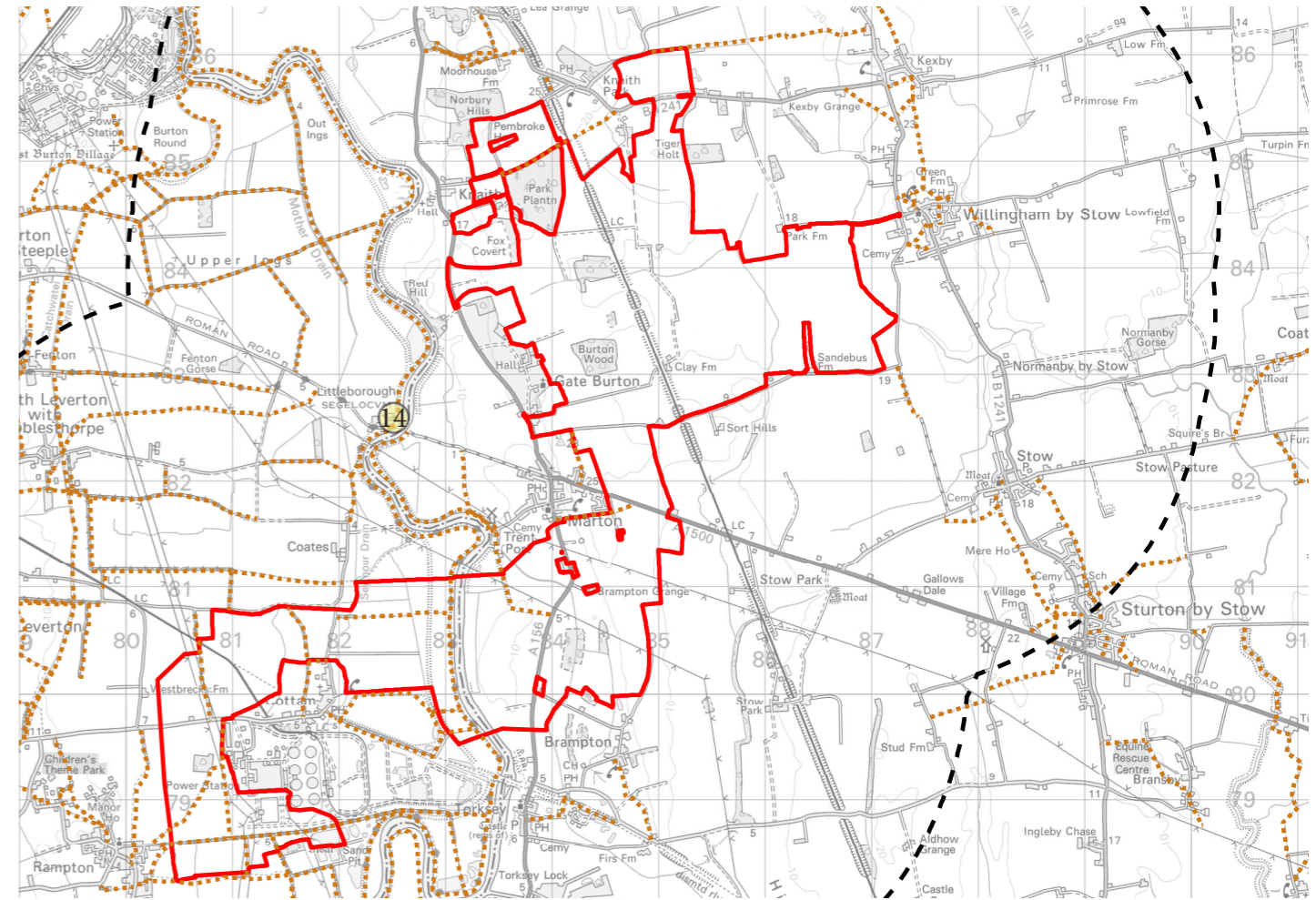


Viewpoint 13 will have a view of the solar park at this viewpoint. **Photomontage Suggested.**

Gate Burton Energy Park

Lincolnshire County Council (LCC) - Additional Viewpoints

Viewpoint 14: Littleborough Tow Path



Viewpoint 14 - Located along the Littleborough Tow Path, west of the River Trent. Viewpoint located approximately 1.5km west of the nearest solar park boundary.

Location of Viewpoint 14 in relation to the PRow network.



Viewpoint 14 may have a view of the upper elements of the solar park at this viewpoint. **Photomontage Suggested.**

Technical Memorandum 1

Lincolnshire County Council, Gate Burton Solar Project

Landscape Meeting (Virtual): Viewpoint Discussion: Held 01 March 2022

A meeting was held on Tuesday 1st March 2022 over Microsoft Teams for the Gate Burton Energy Park to discuss Landscape Viewpoints. The meeting was attended by representatives from the development team (including consultants from AECOM), Lincolnshire County Council, Nottinghamshire County Council, West Lindsey District Council, Bassetlaw District Council, and AAH Consultants (providing landscape and visual advice and support to Lincolnshire County Council).

The meeting was held and led by representatives from AECOM, with the project landscape architect, Joerg Schulze, presenting an overview of the main landscape and visual aspects of the site and study area, and also providing a detailed walk through of the identified viewpoints. The following information was issued via email prior to the meeting:

- List of proposed Viewpoints;
- Viewpoint Maps 1-4;
- Viewpoint photography for viewpoints 1-20;
- Viewpoint photography for 5 cumulative viewpoints; and
- Viewpoint photography for 4 viewpoints focusing on the grid corridor connection options.

The purpose of the meeting was to discuss the: *“selected viewpoints with a view to getting agreement from the host authorities that the selected viewpoints are adequate for the project both in terms of the main site and the grid corridor connection options.”*

Following the presentation, there was the opportunity for discussion on what was presented, with a focus on the viewpoint selections. It was requested that any comments be received by 8th March to assist with obtaining “winter views” (limited leaf cover). As stated by AAH Consultants and LCC in the meeting, it would not be possible to agree the final viewpoints at this stage, however we would be able to provide more broad brush comments, which we would follow up later in the month with more detailed information following site visits and further discussion with the developer.

AAH general comments on viewpoints and supporting information/figures are as follows:

- AAH are planning on carrying out an initial site visit to Gate Burton Solar week commencing 14th March. Following this, we will review the viewpoints and organise a follow up meeting with the developer’s team;
- Could an updated ZTV be issued to LCC/AAH if available – it would be a useful set of information if this included the selected viewpoints, PROW and Roads marked on also. This would be ideally issued in good time prior to the 14th March to assist in our site work;
- Overall, in regards to viewpoints:
 - PROW look underrepresented in viewpoints, particularly the PROWs north of the Site: **Knai/44/1** and **Upto/53/1**. Views from these locations would likely be required being within and adjacent to the site;
 - While we need to confirm on site, as an initial comment, the following PROW may also require a viewpoint, or a clear statement as to them being scoped out:
 - Group of PROW north of site including LEA/1054/1;

- LEA/513/1;
 - Group of PROW East of site including KEXB/58/1;
 - STOW/70/1
 - MTON/69/1;
 - PROW west of the River Trent; and
 - Group of PROW South East of site including STOW/71/2.
- Is there visibility of the site from Littleborough, and if so we would recommend a viewpoint from this location due to heritage assets in this location.

As stated, AAH will provide more detailed feedback once we have carried out our necessary field and desktop work. While we appreciate the timings of obtaining winter views for photography, we do need to ensure we have time to properly review the information.

Also, following a recent meeting with the Cottam and West Burton teams, we have initially suggested a workshop between all the three sites in West Lindsey, which would allow for a discussion around cumulative views and impacts, as well as discussion of the main landscape and visual issues. The date and invitation for this will follow, and will likely be organised by LandPro (planners and landscape team on West Burton and Cottam).

Oliver Brown CML
AAH Landscape

████████████████████
████████████████████████████████████████
████████████████████████████████████████

08 March 2022

Technical Memorandum 2 (AAH TM02)

Lincolnshire County Council, Gate Burton Solar Project

Visual Amenity: Viewpoint Comments

Following the meeting held on Tuesday 1st March 2022 (refer AAH TM01) over Microsoft Teams to discuss Landscape Viewpoints, we have reviewed the information presented and provided by AECOM, including the Gate Burton Scoping Report, and subsequently attended site over the week commencing 14th March. We walked the Gate Burton Solar site and visited all the viewpoints proposed by AECOM. The proposed viewpoints were identified on the following information which was issued via email prior to the 1st March meeting:

- List of proposed Viewpoints;
- Viewpoint Maps 1-4;
- Viewpoint photography for viewpoints 1-20;
- Viewpoint photography for 5 cumulative viewpoints; and
- Viewpoint photography for 4 viewpoints focusing on the grid corridor connection options.

Following this, we have the following general comments and requests:

1. Could an updated ZTV be issued to LCC/AAH when available. While we appreciate a ZTV is a tool, and should not be relied upon to illustrate the full extent of potential visibility of a site or development proposals, it would assist in our understanding of wider visibility. This would be a particularly useful set of information if this included the selected viewpoints, PROW and Roads marked on also. It should also be clear as to the height, extent and location of any proposals that the ZTV has been generated upon;
2. The base maps used for the figures provided to date are not very clear or detailed. Could a 1:20,000 be utilised for further information which provides a more suitable scale;
3. Please could further details be provided about the on-site substation (paragraph 2.1.37 of the scoping report), including location, size/massing and height, including what features would be 11 metres in height. As at this stage we do not have this information, the location of this would likely have visual impacts that would require additional viewpoints beyond those initially identified;
4. Paragraph 2.2.6 of the scoping report identifies an offsite sub-station option at Cottam with an 11 metre high feature. Could the location, size/massing and height, including what features would be 11 metres in height, of this off site substation be provided. Again this would likely have visual impacts that would require additional viewpoints beyond those initially identified;
5. We do not feel we can provide more detailed feedback at this stage on the Grid Connection Corridors until further information is provided. However, at this point one option does not appear to be preferable to the others, and would expect the LVIA to provide a clear evaluation and likely impacts of any route;

6. Having visited site over the period of several days, we have observed that while many of the surrounding lanes and tracks within the study area are rural and remote in character and primarily used for motor vehicles and farm access, they are also well used by dog walkers, horse riders and leisure cyclists, and subsequently the assessment should consider this within the methodology. The presence of several well-tended benches and grass verges with swathes of spring bulb planting reinforce the local value of these networks beyond being road networks, which also provide suitable PROW connections for walkers improving the connectivity of the wider recreational footpath network.

The following comments are in regards to visibility of the site from specific receptors and viewpoints, and the plan attached to this memo should be referred to for these target notes:

- A. **Additional viewpoint should be included from the eastern edge of Knaith, along Knaith Hill.** Photography should provide the most advantageous view of the site and proposed development;
- B. **Additional viewpoints should be included from the PROWs north of the Site: *Knai/44/1*, *Knai/44/2* and *Upto/53/1*.** These will be sensitive receptors with very close views, therefore views from these locations would be required within and adjacent to the site and photography should provide the most advantageous views of the site and proposed development;
- C. **Additional viewpoint should be included from Upton Road looking south to the northern site boundary.** There is a clear gap in boundary vegetation at the junction with PROW *Upto/53/1*. Photography should provide the most advantageous views of the site and proposed development;
- D. **Additional viewpoints should be included from along Padmoor Lane looking south/south west to the northern site boundary.** The hedgerow is low in some locations and there are several gaps, including field gates, that allow views to the site. Photography should provide the most advantageous views of the site and proposed development;
- E. **Additional viewpoints should be included from along *Stow/70/1* looking north/north west.** The hedgerow along the southern site boundary (Marton Road) is relatively low in some locations that allow views from this PROW to the site. Photography should provide the most advantageous views of the site and proposed development;
- F. The following PROW have been identified as having *potential* views of the site and/or the proposed development. Therefore could a either a viewpoint be obtained or a clear statement provided as to them being reviewed and subsequently scoped out:
1. Group of PROW north of site including *Lea/1054/1*;
 2. *Lea/513/1*;
 3. Group of PROW East of site between Kexby and Willingham by Stow including *Kexb/58/1*; and
 4. Group of PROW South East of site including *Stow/71/2*.
- G. **Additional viewpoint should be included from along *Mton/69/1* looking north/north east.** While there is a band of vegetation along the southern site boundary in this location, (Willingham Road) there may be potential glimpsed views from along this PROW to the site.

Photography should provide the most advantageous views of the site and proposed development;

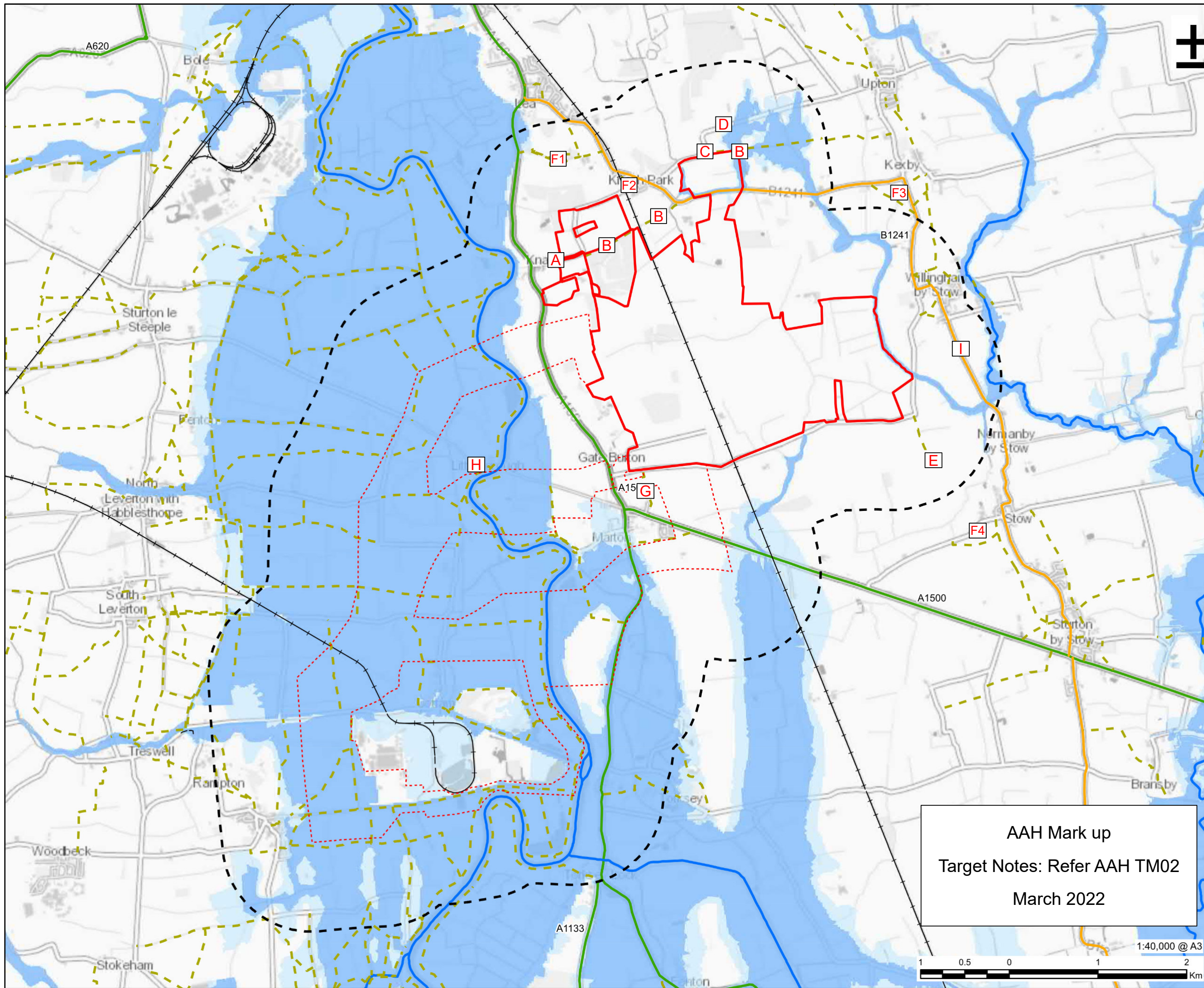
- H. Could a clear statement provided as to potential views from Littleborough and them being reviewed and subsequently scoped out. There are several heritage assets as well as PROW in this location and it is not clear if this location has been fully reviewed in regards to views of the site and development – if there are potential views of the site and/or proposed development, a viewpoint should be obtained from this location; and
- I. Could a clear statement be provided as to potential views from the B1241 between Willingham by Stow and Normanby by Stow and them being reviewed and subsequently scoped out. The B1241 is referenced within para. 10.4.16 of the scoping report as having views of the site.

As stated, at this stage we do not have details on the location and appearance/extent of taller/larger elements that for part of the development which would likely have visual impacts that would require additional viewpoints beyond those initially identified.

Oliver Brown CMLI
AAH Landscape

██████████
████████████████████
████████████████

24 March 2022



LEGEND

- Solar PV Site
- Grid Connection Corridor Options
- 1km Buffer
- A Road B Road
- Main River
- Public Right of Way
- Railway
- Flood Zone 2
- Flood Zone 3

NOTES
Contains OS data © Crown Copyright and database right 2020. Contains Lincolnshire County Council, North Lincolnshire County Council and Nottinghamshire County Council data 2021. © Environment Agency copyright and/or database right 2021. All rights reserved. Some features of this map are based on digital spatial data from the Centre for Ecology & Hydrology, © NERC (CEH). ©

ISSUE PURPOSE
EIA Scoping Report

PROJECT NUMBER
60664324

FIGURE TITLE
Constraints Plan

FIGURE NUMBER
Figure 1-3b

AAH Mark up
Target Notes: Refer AAH TM02
March 2022



This drawing has been prepared for the use of AECOM's client. It may not be used, modified, reproduced or relied upon by third parties, except as agreed by AECOM or as required by law. AECOM accepts no responsibility, and disclaims liability whatsoever, to any party that uses or relies on this drawing without AECOM's express written consent. All measurements must be obtained from the stated dimensions.